

# WATER RESOURCES SUMMARY

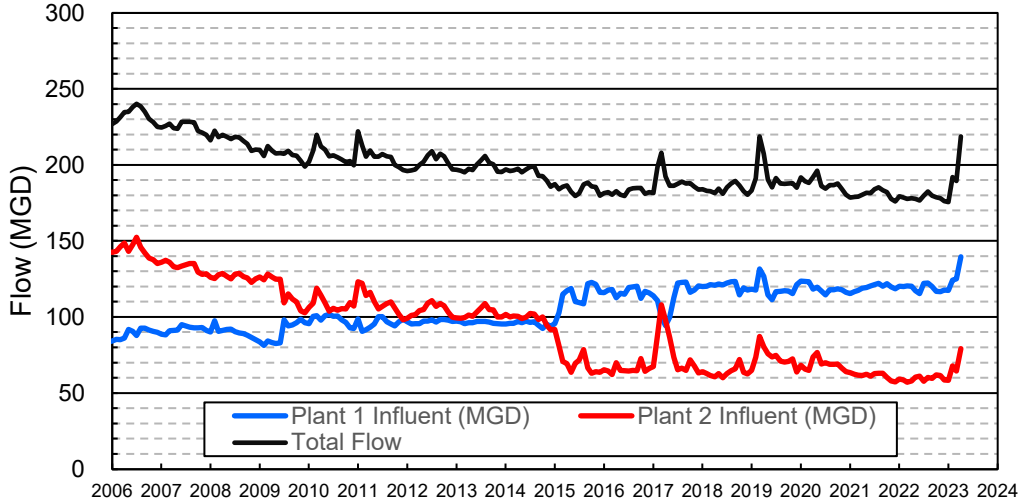
March 2023

INFLOWS & OUTFLOWS (acre-feet)	Total for Month	Year to Date - This Year    Last Year	
<b>BASIN SUPPLIES</b>			
Water Purchases from MWD (excludes In Lieu)	0	16,864	20,003
Water into MWD Storage Account (excludes In Lieu)	0	0	0
SAR & Santiago Creek Flows (accounts for storage to/from recharge facilities)	119,047	242,176	104,345
GWRS Water to Forebay	4,151	53,564	45,298
GWRS Water to Mid-Basin Injection Wells	558	5,644	5,889
GWRS Water to Talbert Barrier	1,231	15,758	18,561
OC-44 and F. Valley Water to Talbert Barrier	0	18	6
Alamitos Barrier Water	180	1,991	2,045
Incidental Recharge (estimated)	8,500	33,900	15,936
Evaporation from Recharge Basins	(312)	(2,101)	(1,833)
River Flow Lost to Ocean	<u>(96,214)</u>	<u>(137,677)</u>	<u>(16,390)</u>
Total Groundwater Recharge	37,140	230,136	193,859
<b>WATER PRODUCTION</b>			
Groundwater Production	16,696	177,465	190,887
MWD Storage Program Withdrawals	<u>0</u>	<u>0</u>	<u>0</u>
Total Groundwater Production	16,696	177,465	190,887
<b>BASIN BALANCE</b>			
Change in Groundwater Storage	20,444	52,671	2,973
Change in Groundwater Storage excluding MWD Stored Water	20,444	52,671	2,973
Accumulated Overdraft	-----	205,331	245,030
Accumulated Overdraft excluding MWD Storage	-----	205,331	245,030
<b>IN LIEU WATER</b>			
OCWD In Lieu Purchases (MWD Cyclic Storage)	0	0	0
MWD In Lieu Storage	<u>0</u>	<u>0</u>	<u>0</u>
Total In Lieu	0	0	0
<b>OTHER KEY INFORMATION</b>			
1. MWD Water Deliveries to Producers	3,703	72,022	88,622
2. Basin Production Percentage	81.8%	71.1%	68.3%
3. Total Water Demand	21,270	264,155	295,910
4. Total GWRS Production	5,944	75,018	69,792
5. Green Acres Project Water	87	2,518	2,677
6. SAR Water Quality			
- Total Dissolved Solids (TDS) of SAR below Prado Dam (ppm)	324	-----	690
- Total Nitrogen of SAR below Prado Dam (ppm)	1.9	-----	4.5
7. Month-End Water Storage Behind Prado Dam	19,435	-----	783
8. Month-End Water Storage in Recharge Facilities	23,968	-----	14,487
9. Water Storage Change in Recharge Facilities	657	13,092	5,827
10. Total Artificial Recharge	28,640	196,236	177,923
11. Monthly Mean Temperature at Santa Ana Fire Station (°F)	57.2	-----	63.3
12. Rainfall at FHQ (inches)	7.38	24.70	6.70

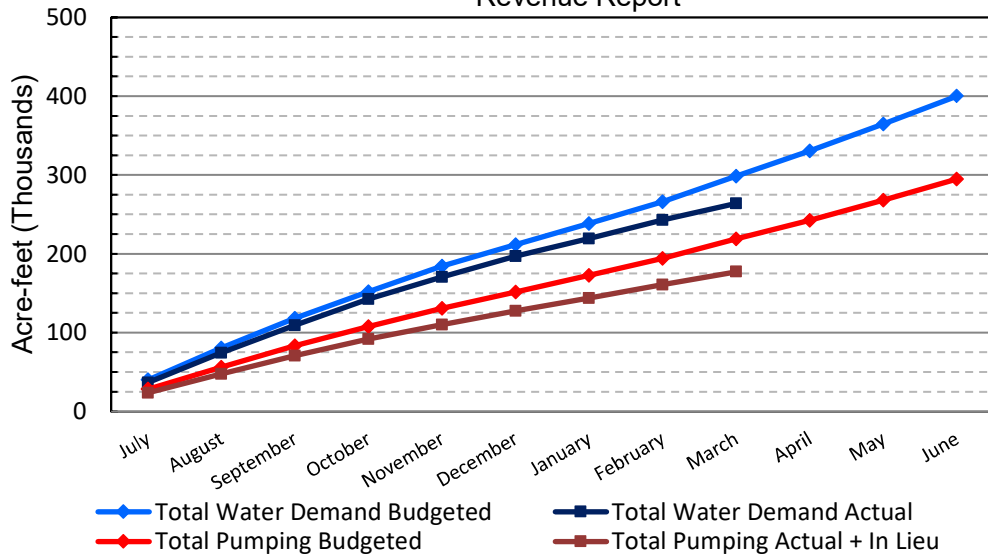
\*\*\* Note: Data are preliminary, subject to change

4/13/2023

### Orange County Sanitation District Influent Flows Report

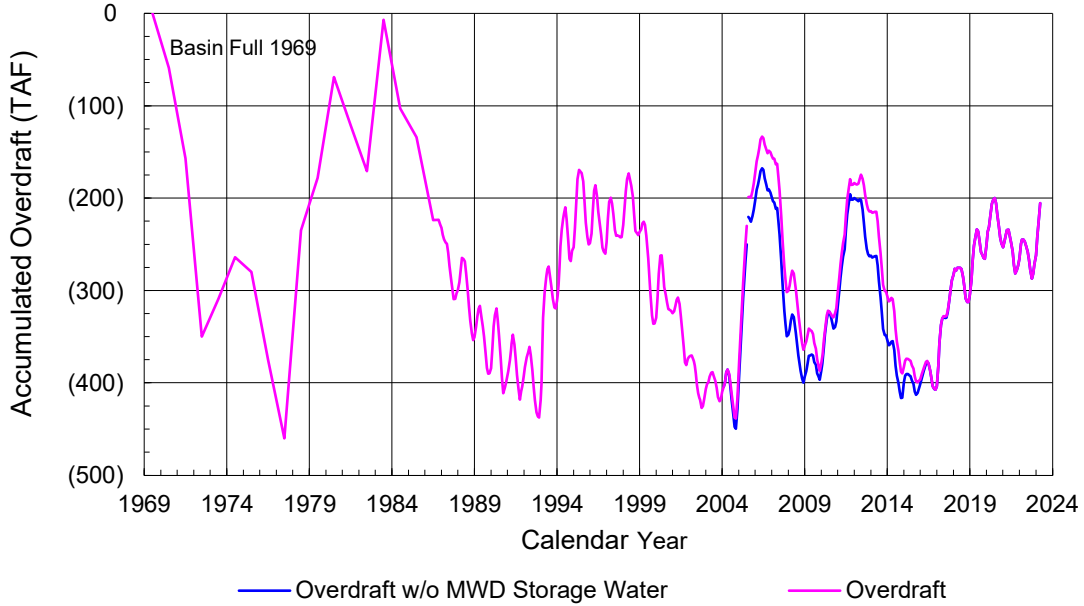


### 2022-23 Water Demands/Groundwater Pumping + In Lieu/RA Revenue Report

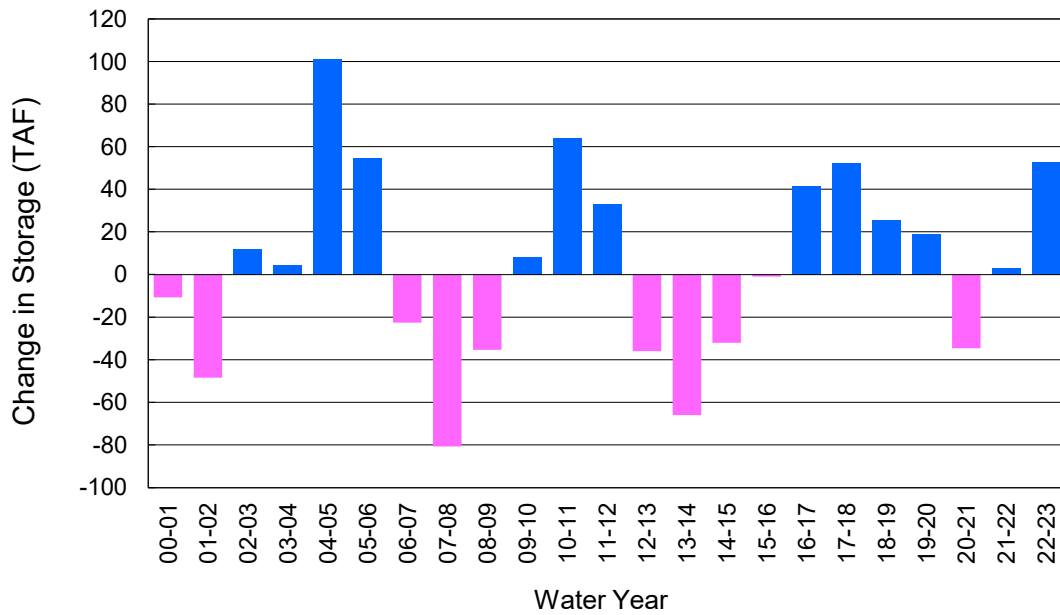


	Monthly		Accumulated Total for the Year			
	Budget	Actual	Budget	Actual	Difference	Percent
Total Water Demand	32,800	21,270	298,700	264,155	-34,545	88.44%
Total Pumping + In Lieu	24,800	16,696	219,100	177,465	-41,635	81.00%
RA Revenue	\$11,457,600	\$7,713,559	\$101,224,200	\$81,988,606	-\$19,235,594	81.00%

### Accumulated Overdraft



### YTD Change in Groundwater Storage in OCWD



## PRODUCERS WATER USAGE SUMMARY

**March 2023**

(AF except BPP)

WATER AGENCY	Ground-water (1)	In Lieu	Reclaimed Water	Total Import (2)	Total Demand	2022-23 YTD Demand	2021-22 YTD Demand	YTD % Diff Demand	MAR 2023 BPP	2022-23 YTD BPP	2021-22 YTD BPP
Anaheim	1,137	0	0	1,608	2,745	39,155	44,379	88%	41.4%	26.6%	29.2%
Buena Park	672	0	0	0	672	8,834	9,738	91%	100.0%	86.5%	85.9%
East Orange County	0	0	0	38	38	554	677	82%	0.5%	0.3%	0.3%
Fountain Valley	505	0	3	0	508	6,542	7,545	87%	100.0%	100.0%	100.0%
Fullerton	908	0	0	225	1,133	15,486	17,575	88%	80.1%	76.7%	76.0%
Garden Grove	1,297	0	0	0	1,297	14,805	16,423	90%	100.0%	75.5%	83.0%
Golden State	617	0	0	585	1,202	15,024	17,221	87%	51.3%	56.7%	62.8%
West OC System	617	-	-	173	790	9,228	10,433	88%	na	na	na
East OC System	0	-	-	412	412	5,795	6,788	85%	na	na	na
Huntington Beach	1,318	0	0	167	1,485	17,560	19,425	90%	88.8%	64.8%	83.4%
Irvine Ranch	3,044	0	836	1	3,881	45,178	49,749	91%	100.0%	99.7%	98.9%
DRWF Clear	1,676	-	-	-	1,676	19,350	21,724	89%	na	na	na
DRWF Color	730	-	-	-	730	6,346	4,545	140%	na	na	na
Laguna Beach	13	0	0	180	194	2,269	2,456	na	6.9%	19.8%	0.0%
La Palma	105	0	0	0	105	1,210	1,239	98%	100.0%	99.7%	95.1%
Mesa Water (MW)	972	0	23	0	995	11,607	12,902	90%	100.0%	99.9%	98.3%
MW Clear	943	-	-	-	943	8,811	9,767	90%	na	na	na
MW Amber	30	-	-	-	30	2,249	2,283	99%	na	na	na
Newport Beach	656	0	2	211	869	9,792	10,659	92%	75.7%	77.7%	71.2%
Orange	1,190	0	0	134	1,324	17,192	19,769	87%	89.9%	78.3%	53.0%
OCWD (GAP)	116	0	0	0	116	1,060	1,121	95%	100.0%	100.0%	100.0%
Santa Ana	1,773	0	6	342	2,120	23,034	24,647	93%	83.8%	69.6%	77.6%
Seal Beach	188	0	0	1	188	2,103	2,504	84%	99.7%	71.8%	76.7%
Serrano	72	0	0	20	92	1,927	2,092	92%	78.1%	63.8%	12.9%
Tustin	368	0	0	183	551	7,174	8,073	89%	66.8%	52.2%	56.4%
Westminster	672	0	0	0	672	7,301	8,057	91%	100.0%	97.0%	100.0%
Yorba Linda	<u>700</u>	<u>0</u>	<u>0</u>	<u>4</u>	<u>704</u>	<u>12,299</u>	<u>14,647</u>	<u>84%</u>	<u>99.4%</u>	<u>84.8%</u>	<u>20.4%</u>
SUBTOTAL:	16,324	0	870	3,698	20,892	260,105	290,896	89%	81.8%	71.1%	68.3%
Other Producers (Est ~3% of Subtotal)	<u>372</u>	<u>0</u>	<u>0</u>	<u>5</u>	<u>377</u>	<u>4,050</u>	<u>5,015</u>	<u>81%</u>			
<b>TOTAL:</b>	<b>16,696</b>	<b>0</b>	<b>870</b>	<b>3,703</b>	<b>21,269</b>	<b>264,155</b>	<b>295,910</b>		<b>81.8%</b>	<b>71.1%</b>	<b>68.3%</b>
OCWD (Talbert Barrier)	0		1,231	0	1,231	15,776	18,567				
OCSA (GAP)	na		52	na	52	788	444				

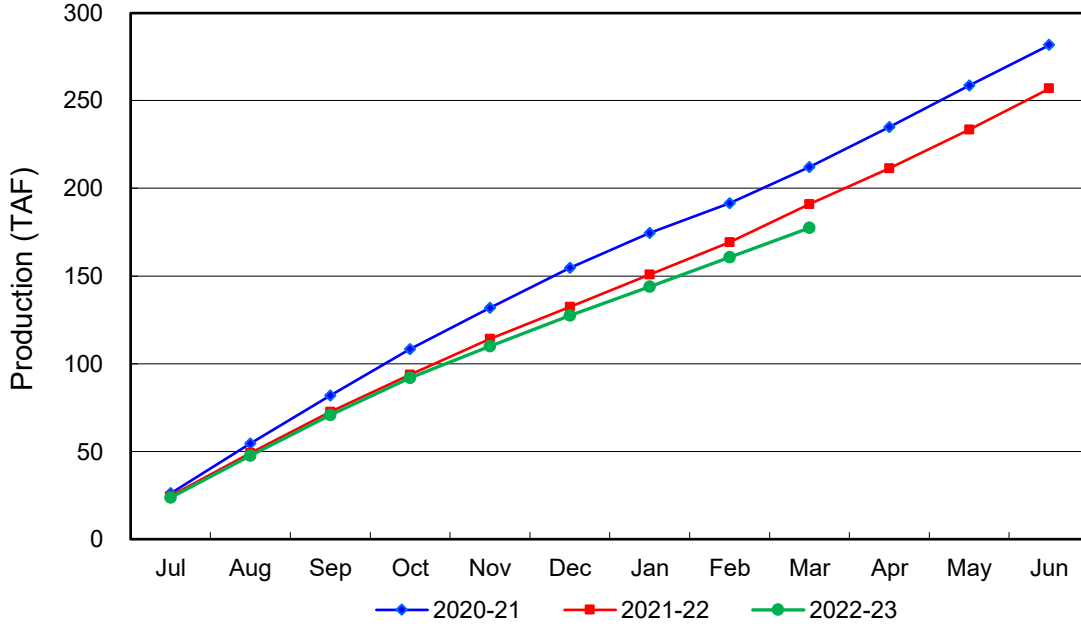
Estimated

(1) Excludes MWD CUP Withdrawals

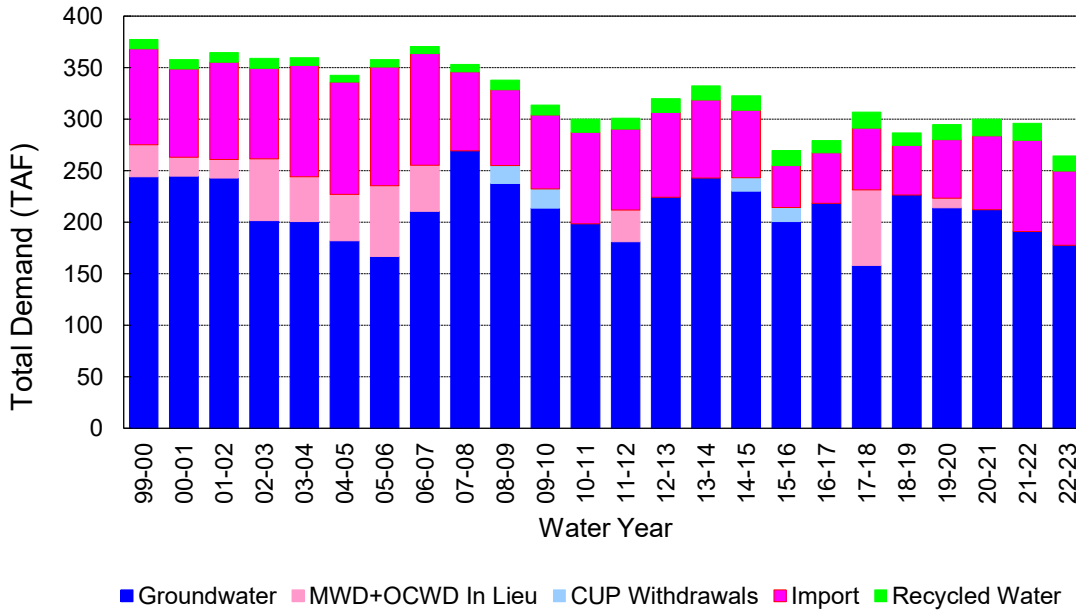
(2) Includes MWD CUP Withdrawals & In Lieu Water

4/13/2023 13:53

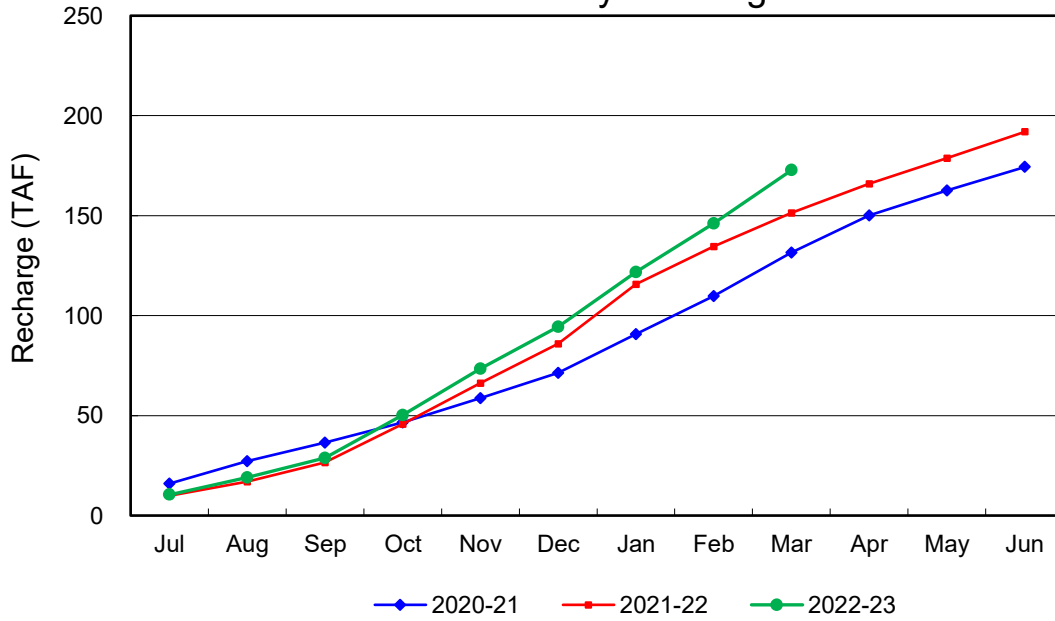
### Annual Groundwater Production



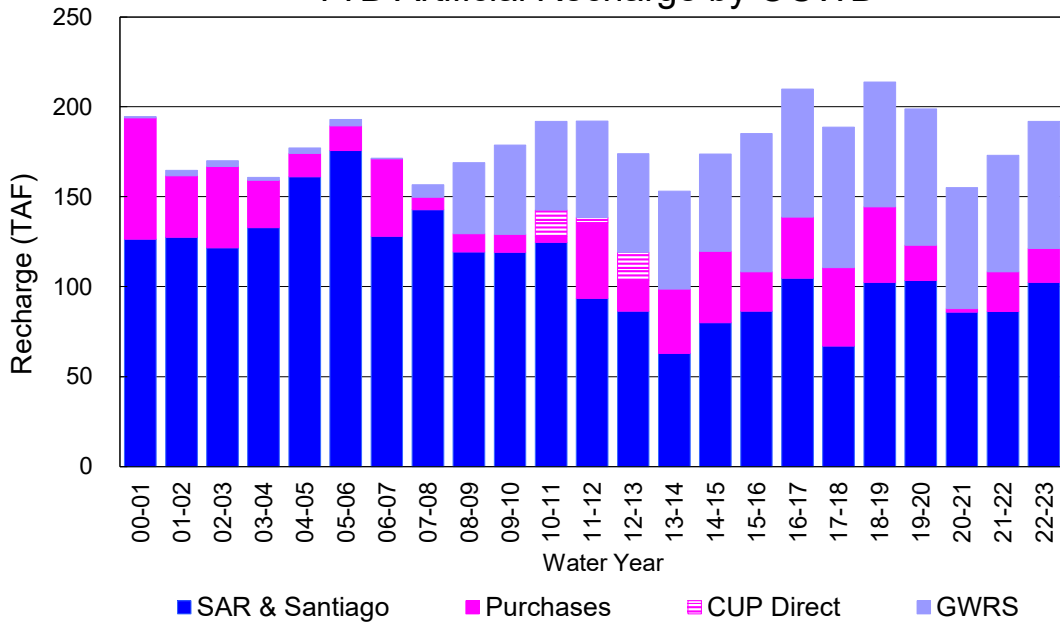
### YTD Total Demand in OCWD



### Annual Forebay Recharge



### YTD Artificial Recharge by OCWD



## RECHARGE AREAS REPORT

March 2023

	Percolation (AF)	Remarks
RIVER SYSTEM	6,108	99 cfs per day average perc
DESILTING SYSTEM	na	SAR
OFF-RIVER SYSTEM	188	SAR
WARNER SYSTEM	417	SAR
OLIVE BASIN	na	Passive System
ANAHEIM LAKE	2,412	SAR
MINI-ANA LAKE	224	SAR
MILLER BASIN	1,296	SAR
KRAEMER BASIN	2,464	SAR
LA PALMA BASIN	2,047	GWRS
MIRA LOMA	1,772	GWRS
LA JOLLA BASIN	516	SAR
PLACENTIA BASIN	na	
RAYMOND BASIN	na	
FIVE COVES BASIN	na	
BURRIS BASIN	1,044	SAR
RIVER VIEW BASIN	na	
FLETCHER BASIN	109	SAR
SANTIAGO BASINS	7,153	Burris pump, local runoff, Villa Park release
SANTIAGO CREEK	922	Santiago spilling
<b>TOTALS</b>	<b>26,672</b>	
<b>5-YR AVERAGE</b>	<b>23,475</b>	

FLOWS TO RECHARGE AREAS (AF)	
Imperial Headgates (estimated)	105,000
GWRS	4,152
OC-28 (MWD)	0
OC-28a (MWD)	0
OC-59	0
Est'd local Forebay inflow below Imperial	3,400
Est'd local Santiago inflow (estimated)	3,370
Irvine lake releases (OC-13 MWD)	7,307
Villa Park Dam releases (estimated)	0
Precip at Warner Basin (inches)	7.38
Precip direct to open water surfaces	627
<b>TOTAL INFLOW</b>	<b>123,856</b>

LOSSES FROM RECHARGE AREAS (AF)	
Est'd SAR flow past Chapman Ave.	95,750
Est'd Santiago Cr. flow to SAR	464
Est'd flows past Raymond Basin	0
Calc'd evap (inches) Estimated	3.68
Est'd evaporative losses	312
<b>TOTAL LOSSES</b>	<b>96,526</b>

STORAGE CHANGES (AF)			
Facility	Begin	End	Net
Deep basins	9,705	10,583	878
Santiago Pits	13,606	13,385	-221
River			
Off-river			
Irvine Lake			
<b>TOTAL</b>	<b>23,311</b>	<b>23,968</b>	<b>657</b>

SUMMARY (AF)	
TOTAL INFLOW	123,856
TOTAL LOSSES	96,526
STORAGE CHANGE	657
CALC'D PERCOLATION	26,672

## DEEP BASINS MONTHLY STATUS

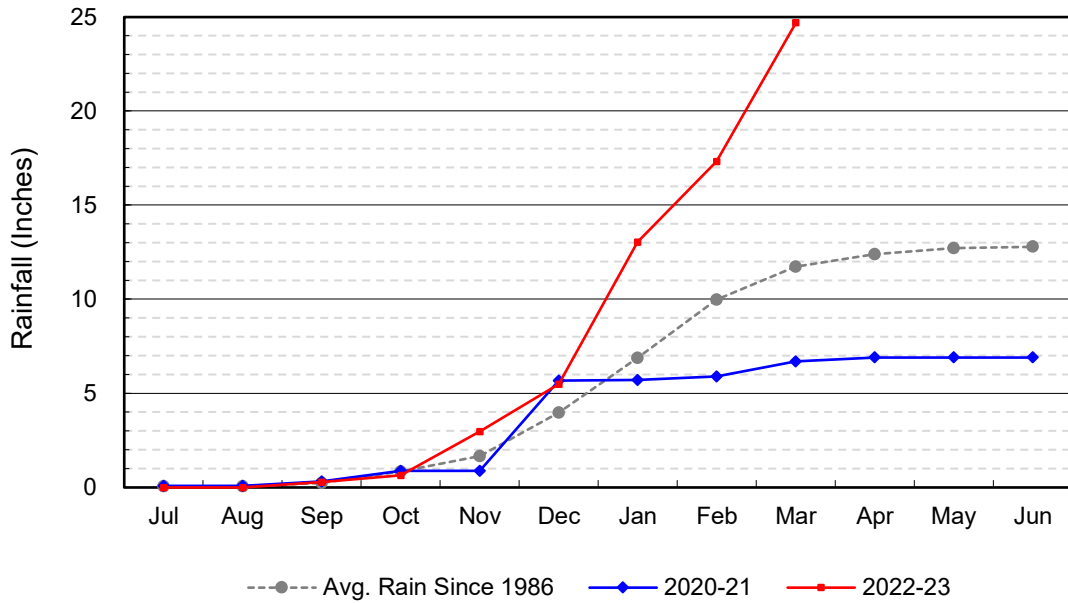
**March 2023**

(values in acre-feet)

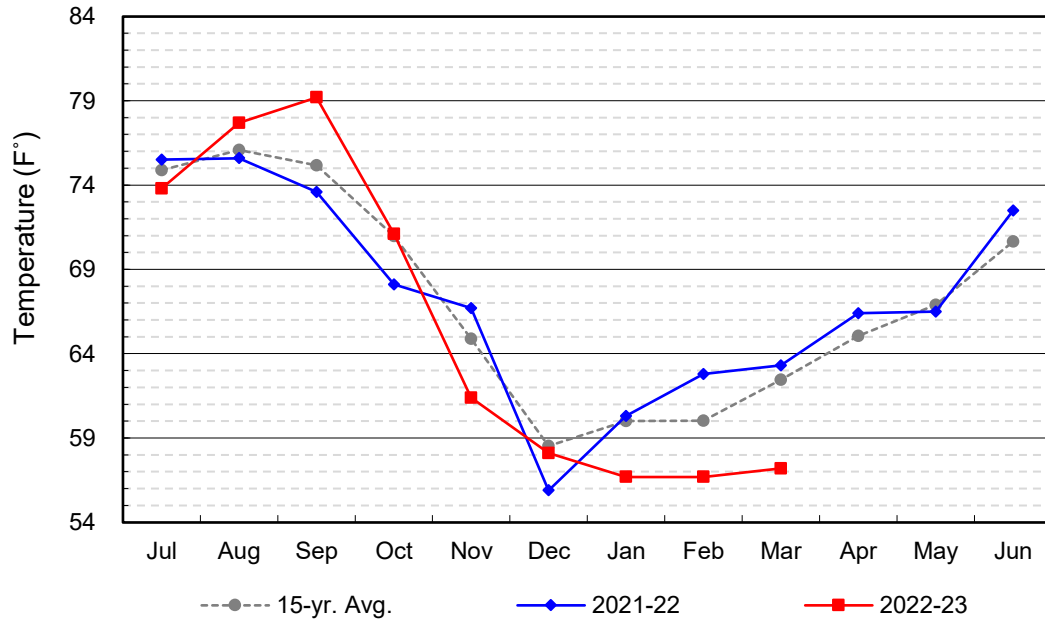
<i>Facility</i>	<i>Storage Start</i>	<i>Storage End</i>	<i>Maximum Storage</i>	<i>Total Perc</i>	<i>Max Perc</i>	<i>Avg Perc</i>	<i>Avg W.S. Elev</i>
Desilting Ponds	230	230	252	na	na	na	na
Fos-Huckleberry	533	569	628	na	na	na	na
Conrock Basin	555	595	661	na	na	na	na
Warner Basins	2,892	2,884	2,900	417	na	na	238
Olive Pit	76	83	95	na	na	na	220
Anaheim Lake	1,835	2,040	2,300	2,412	102	78	219
Mini-Anaheim Lk	0	2	10	224	16	7	222
Miller Basin	29	242	350	1,296	75	45	210
Kraemer Basin	1,007	1,069	1,055	2,464	164	80	216
La Palma Basin	90	91	101	2,047	76	66	219
Mira Loma	0	31	53	1,772	89	57	215
La Jolla Basin	0	5	20	516	39	17	201
Placentia Basin	0	0	200	na	na	na	na
Raymond Basin	0	0	200	na	na	na	na
Five Coves Basins	296	300	329	na	na	na	na
Burriss Pit	2,146	2,429	2,500	1,044	75	44	171
River View Basin	0	0	8	na	na	na	na
Fletcher Basin	16	13	15	109	5	4	189
Santiago (Bond)	8,324	8,377	8,312	7,153	237	231	285
Santiago (Blu Dia)	5,282	5,008	5,259	-	-	-	-
<b>Totals</b>	<b>23,311</b>	<b>23,968</b>	<b>25,247</b>	<b>19,454</b>			
Prado Dam	20,261	19,435	20,000				



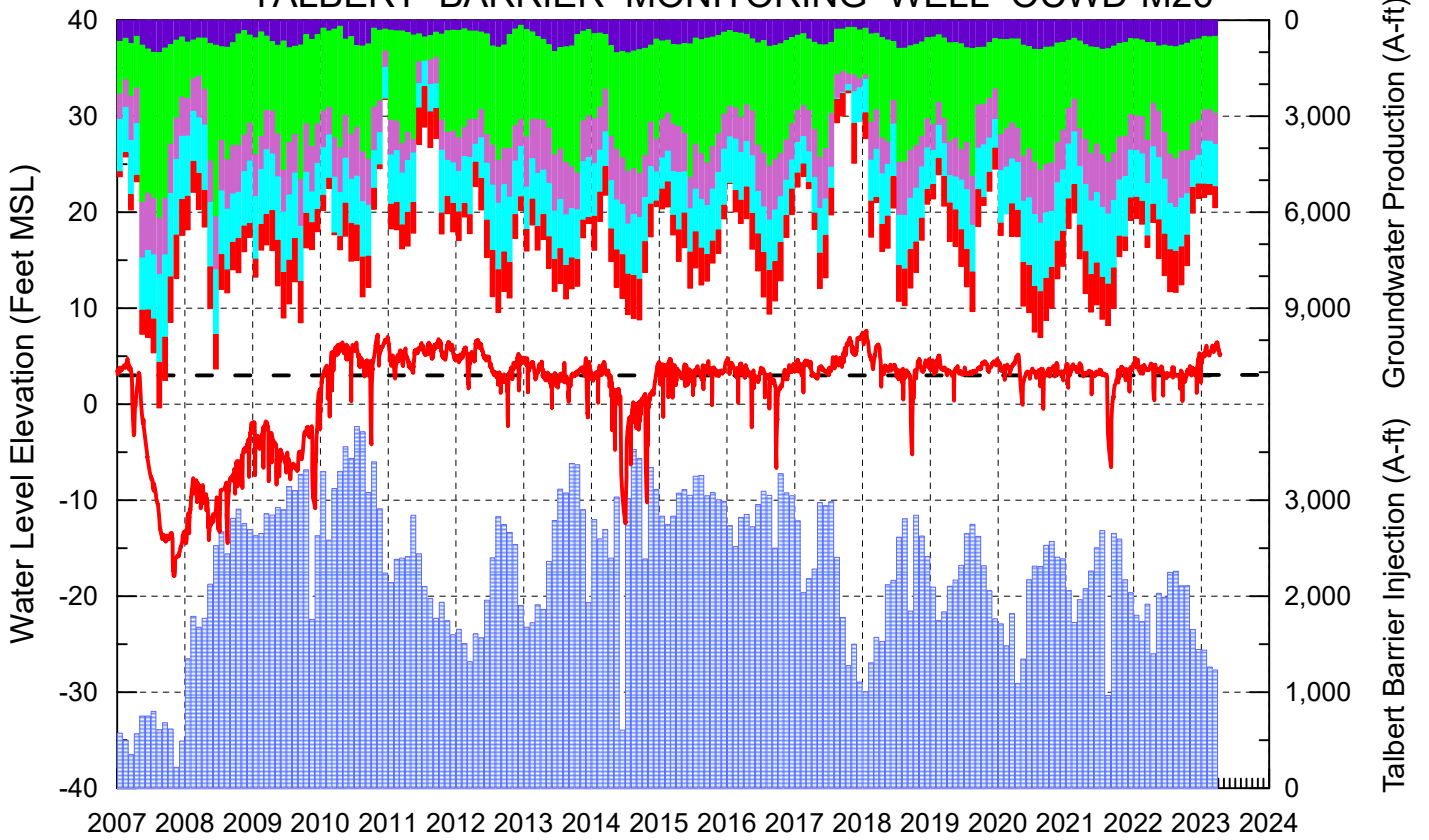
### Cumulative Anaheim Field HQ Rainfall



### Temperature at Santa Ana Fire Station



# TALBERT BARRIER MONITORING WELL OCWD-M26



- Talbert/Lambda Aquifer Mergence Zone Perforated Interval: 71 - 135 ft. bgs
- ▨ Talbert Barrier Injection
- - - Protective Level to Prevent Seawater Intrusion
- ▨ Fountain Valley Groundwater Production
- ▨ IRWD Groundwater Production
- ▨ Mesa Water Groundwater Production
- ▨ Huntington Beach Groundwater Production
- ▨ Newport Beach Groundwater Production

