

# WATER RESOURCES SUMMARY

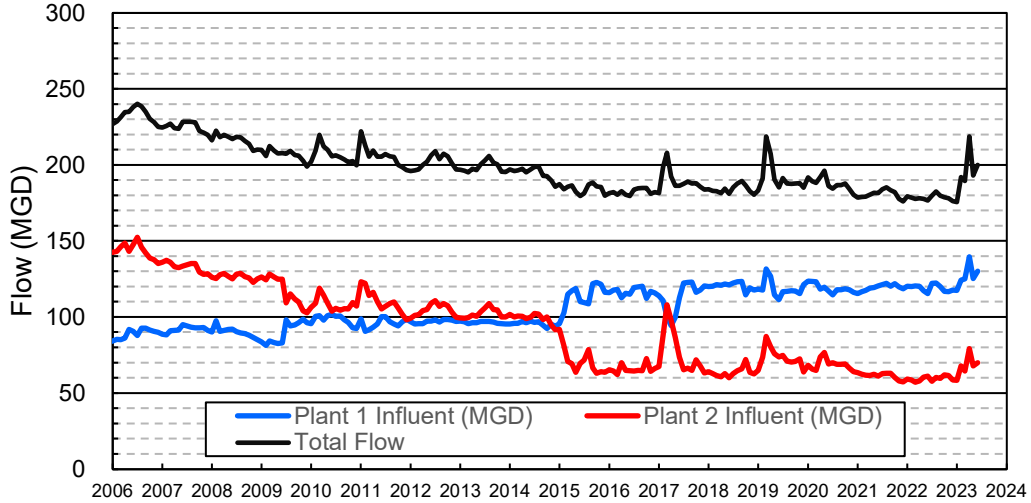
May 2023

INFLOWS & OUTFLOWS (acre-feet)	Total for Month	Year to Date - This Year    Last Year	
<b>BASIN SUPPLIES</b>			
Water Purchases from MWD (excludes In Lieu)	0	16,864	20,003
Water into MWD Storage Account (excludes In Lieu)	0	0	0
SAR & Santiago Creek Flows (accounts for storage to/from recharge facilities)	25,359	293,405	121,999
GWRS Water to Forebay	7,973	66,629	55,453
GWRS Water to Mid-Basin Injection Wells	649	6,875	7,150
GWRS Water to Talbert Barrier	1,388	18,253	21,992
OC-44 and F. Valley Water to Talbert Barrier	3	24	13
Alamitos Barrier Water	90	2,204	2,475
Incidental Recharge (estimated)	7,000	55,900	19,036
Evaporation from Recharge Basins	(431)	(2,934)	(2,311)
River Flow Lost to Ocean	(110)	(141,373)	(16,390)
Total Groundwater Recharge	41,921	315,847	229,419
<b>WATER PRODUCTION</b>			
Groundwater Production	23,549	220,808	233,441
MWD Storage Program Withdrawals	<u>0</u>	<u>0</u>	<u>0</u>
Total Groundwater Production	23,549	220,808	233,441
<b>BASIN BALANCE</b>			
Change in Groundwater Storage	18,372	95,039	(4,022)
Change in Groundwater Storage excluding MWD Stored Water	18,372	95,039	(4,022)
Accumulated Overdraft	-----	162,964	252,024
Accumulated Overdraft excluding MWD Storage	-----	162,963	252,024
<b>IN LIEU WATER</b>			
OCWD In Lieu Purchases (MWD Cyclic Storage)	0	0	0
MWD In Lieu Storage	<u>0</u>	<u>0</u>	<u>0</u>
Total In Lieu	0	0	0
<b>OTHER KEY INFORMATION</b>			
1. MWD Water Deliveries to Producers	5,797	83,244	107,755
2. Basin Production Percentage	80.2%	72.6%	68.4%
3. Total Water Demand	31,193	322,147	361,306
4. Total GWRS Production	10,015	91,817	84,649
5. Green Acres Project Water	310	3,062	3,364
6. SAR Water Quality			
- Total Dissolved Solids (TDS) of SAR below Prado Dam (ppm)	428	-----	708
- Total Nitrogen of SAR below Prado Dam (ppm)	2.2	-----	3.7
7. Month-End Water Storage Behind Prado Dam	6,900	-----	1
8. Month-End Water Storage in Recharge Facilities	23,780	-----	11,078
9. Water Storage Change in Recharge Facilities	(202)	12,904	2,418
10. Total Artificial Recharge	34,921	259,947	210,383
11. Monthly Mean Temperature at Santa Ana Fire Station (°F)	64.1	-----	66.5
12. Rainfall at FHQ (inches)	0.85	25.63	6.91

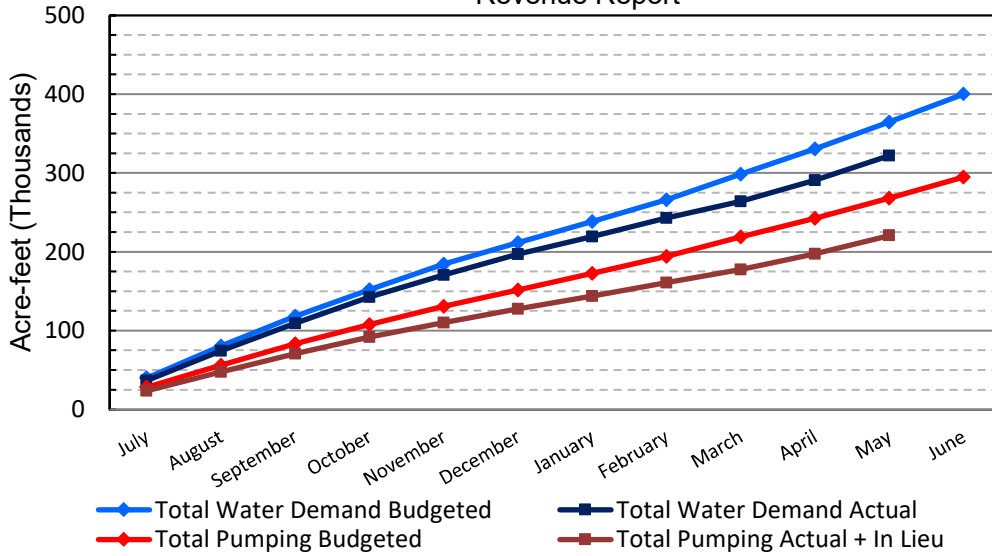
\*\*\* Note: Data are preliminary, subject to change

6/15/2023

### Orange County Sanitation District Influent Flows Report

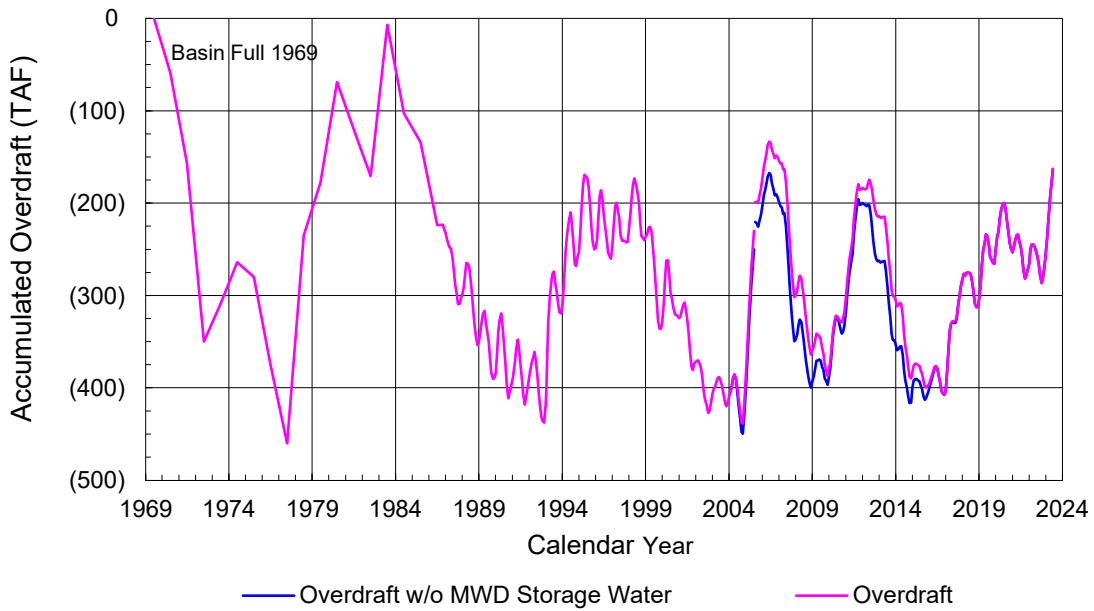


### 2022-23 Water Demands/Groundwater Pumping + In Lieu/RA Revenue Report

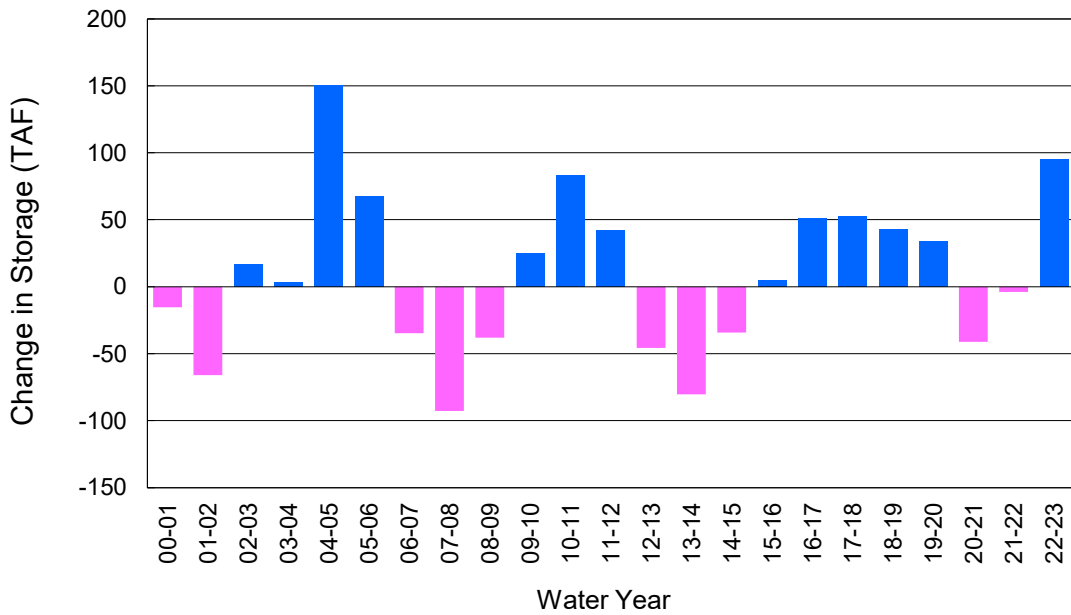


	Monthly		Accumulated Total for the Year			
	Budget	Actual	Budget	Actual	Difference	Percent
Total Water Demand	34,200	31,193	364,600	322,147	-42,453	88.36%
Total Pumping + In Lieu	25,300	23,549	267,900	220,808	-47,092	82.42%
RA Revenue	\$11,688,600	\$10,879,660	\$123,769,800	\$102,013,207	-\$21,756,593	82.42%

### Accumulated Overdraft



### YTD Change in Groundwater Storage in OCWD



## PRODUCERS WATER USAGE SUMMARY

**May 2023**  
(AF except BPP)

WATER AGENCY	Ground-water (1)	In Lieu	Reclaimed Water	Total Import (2)	Total Demand	2022-23 YTD Demand	2021-22 YTD Demand	YTD % Diff Demand	MAY 2023 BPP	2022-23 YTD BPP	2021-22 YTD BPP
Anaheim	1,703	0	0	2,885	4,588	47,537	54,317	88%	37.1%	28.1%	29.0%
Buena Park	949	0	0	13	962	10,740	11,993	90%	98.6%	88.7%	88.0%
East Orange County	0	0	0	70	71	685	826	83%	0.4%	0.3%	0.3%
Fountain Valley	598	0	63	0	661	7,915	9,264	85%	100.0%	100.0%	100.0%
Fullerton	1,255	0	0	496	1,751	18,762	21,597	87%	71.7%	75.6%	74.8%
Garden Grove	1,701	0	0	0	1,701	17,851	20,118	89%	100.0%	79.6%	76.2%
Golden State	1,070	0	0	633	1,703	18,212	21,148	86%	62.8%	57.1%	63.3%
West OC System	882	-	-	168	1,050	11,205	12,832	87%	na	na	na
East OC System	188	-	-	465	653	7,006	8,316	84%	na	na	na
Huntington Beach	1,600	0	0	381	1,981	21,263	24,021	89%	80.8%	67.4%	83.0%
Irvine Ranch	4,287	0	1,659	2	5,948	56,112	59,077	95%	100.0%	99.7%	98.6%
DRWF Clear	3,057	-	-	-	3,057	24,429	24,439	100%	na	na	na
DRWF Color	406	-	-	-	406	7,458	5,777	129%	na	na	na
Laguna Beach	0	0	0	254	254	2,717	3,054	na	0.0%	16.6%	0.0%
La Palma	142	0	0	0	142	1,472	1,545	95%	100.0%	99.7%	96.0%
Mesa Water (MW)	1,279	0	74	0	1,353	14,136	15,914	89%	100.0%	99.9%	98.6%
MW Clear	1,241	-	-	-	1,241	11,161	11,665	96%	na	na	na
MW Amber	38	-	-	-	38	2,305	3,199	72%	na	na	na
Newport Beach	1,110	0	32	2	1,144	12,011	13,302	90%	99.9%	80.9%	70.9%
Orange	1,778	0	0	181	1,959	20,874	23,836	88%	90.8%	81.0%	54.6%
OCWD (GAP)	180	0	0	0	180	1,363	1,426	96%	100.0%	100.0%	100.0%
Santa Ana	2,262	0	20	364	2,646	28,049	30,329	92%	86.2%	72.5%	76.7%
Seal Beach	222	0	0	1	223	2,516	3,067	82%	99.4%	76.4%	80.9%
Serrano	125	0	0	100	224	2,333	2,588	90%	55.6%	61.4%	28.2%
Tustin	588	0	0	246	834	8,716	9,938	88%	70.5%	53.6%	56.0%
Westminster	800	0	0	0	800	8,858	9,891	90%	100.0%	97.5%	100.0%
Yorba Linda	<u>1,297</u>	<u>0</u>	<u>0</u>	<u>162</u>	<u>1,459</u>	<u>14,995</u>	<u>18,064</u>	<u>83%</u>	<u>88.9%</u>	<u>85.9%</u>	<u>31.2%</u>
SUBTOTAL:	22,947	0	1,847	5,789	30,583	317,115	355,318	89%	80.2%	72.6%	68.4%
Other Producers (Est ~3% of Subtotal)	<u>525</u>	<u>0</u>	<u>0</u>	<u>7</u>	<u>533</u>	<u>5,032</u>	<u>5,988</u>	<u>84%</u>			
<b>TOTAL:</b>	<b>23,472</b>	<b>0</b>	<b>1,847</b>	<b>5,797</b>	<b>31,116</b>	<b>322,147</b>	<b>361,306</b>		<b>80.2%</b>	<b>72.6%</b>	<b>68.4%</b>
OCWD (Talbert Barrier)	0		1,388	0	1,388	18,278	22,005				
OCSA (GAP)	na		121	na	121	1,021	544				

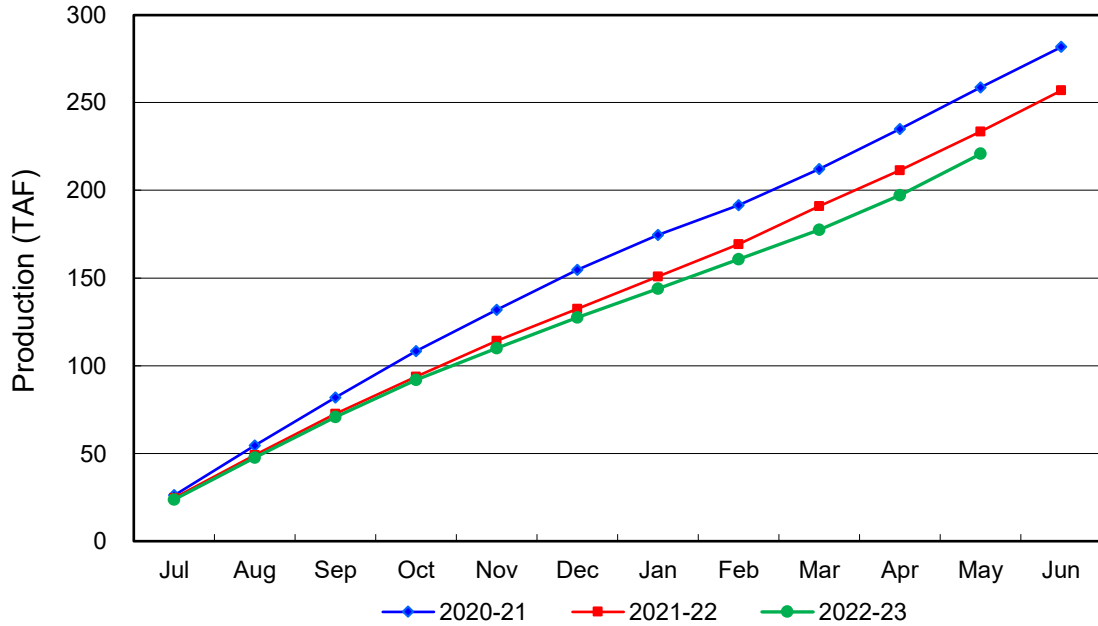
Estimated

(1) Excludes MWD CUP Withdrawals

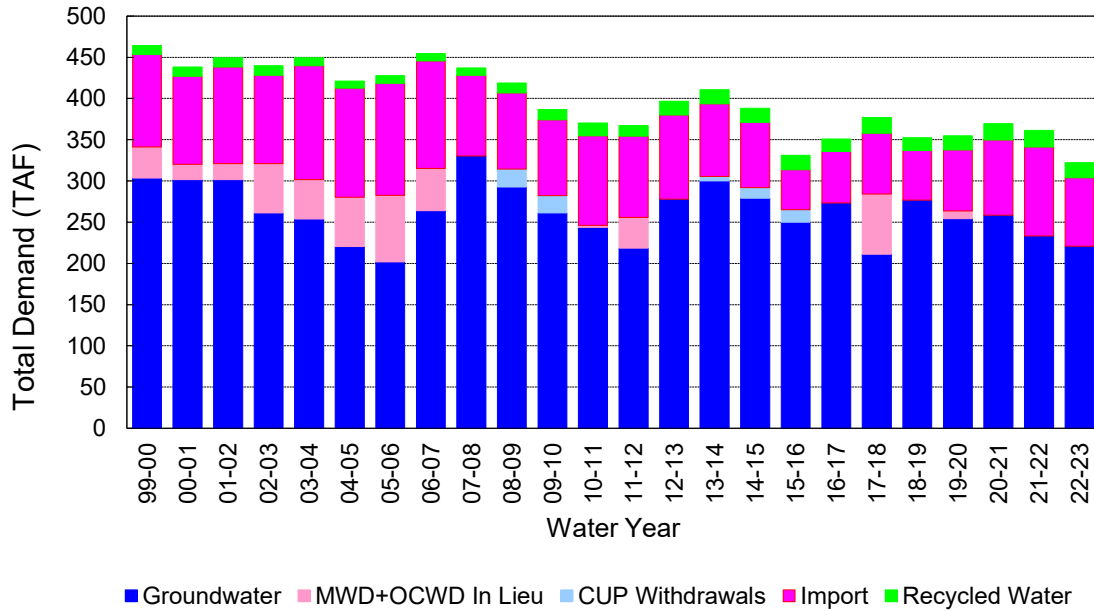
(2) Includes MWD CUP Withdrawals & In Lieu Water

6/15/2023 14:39

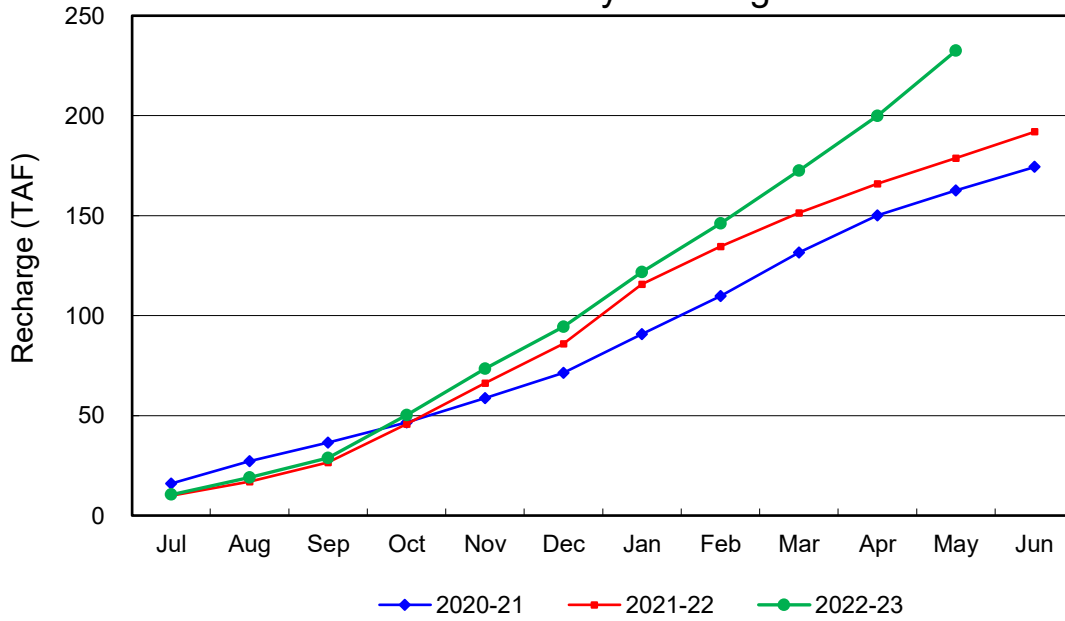
### Annual Groundwater Production



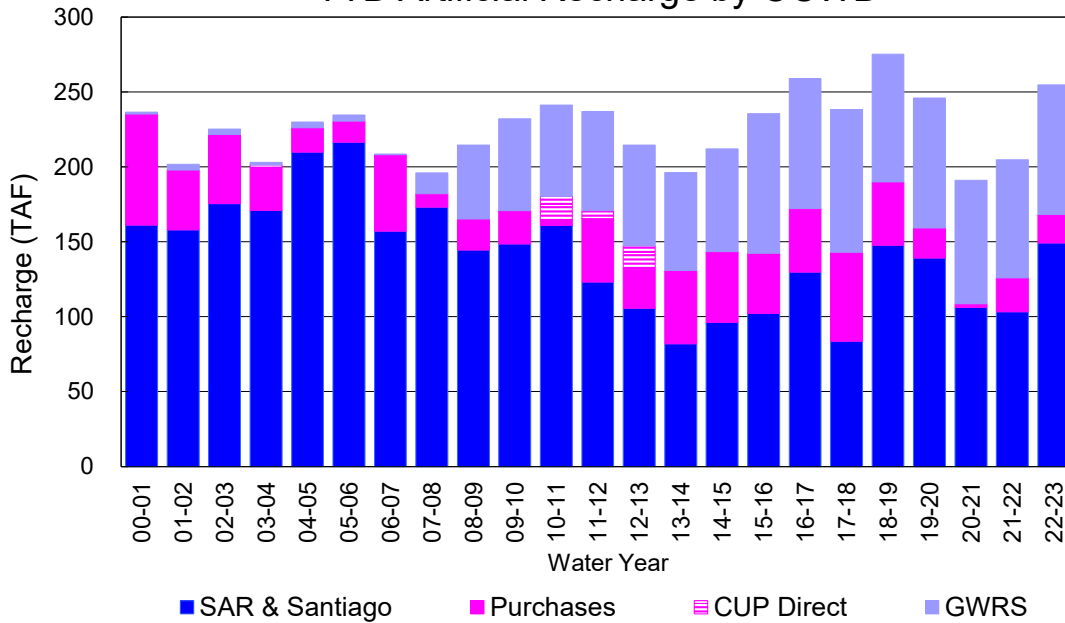
### YTD Total Demand in OCWD



### Annual Forebay Recharge



### YTD Artificial Recharge by OCWD



## RECHARGE AREAS REPORT

May 2023

	Percolation (AF)	Remarks
RIVER SYSTEM	7,733	126 cfs per day average perc
DESILTING SYSTEM	na	SAR
OFF-RIVER SYSTEM	712	SAR
WARNER SYSTEM	546	SAR
OLIVE BASIN	na	Passive System
ANAHEIM LAKE	2,004	SAR
MINI-ANA LAKE	401	SAR
MILLER BASIN	1,835	SAR
KRAEMER BASIN	1,499	SAR
LA PALMA BASIN	5,590	GWRS
MIRA LOMA	2,541	GWRS
LA JOLLA BASIN	623	SAR
PLACENTIA BASIN	na	N/A
RAYMOND BASIN	100	SAR
FIVE COVES BASIN	na	SAR
BURRIS BASIN	2,016	SAR
RIVER VIEW BASIN	296	SAR, Burris pumping
FLETCHER BASIN	113	SAR, Burris pumping
SANTIAGO BASINS	6,481	SAR, Burris pumping
SANTIAGO CREEK	304	SAR, Burris pumping
<b>TOTALS</b>	<b>32,794</b>	
<b>5-YR AVERAGE</b>	<b>21,738</b>	

FLOWS TO RECHARGE AREAS (AF)	
Imperial Headgates (estimated)	24,853
GWRS	7,976
OC-28 (MWD)	0
OC-28a (MWD)	0
OC-59	0
Est'd local Forebay inflow below Imperial	0
Est'd local Santiago inflow (estimated)	304
Irvine lake releases (OC-13 MWD)	0
Villa Park Dam releases (estimated)	0
Precip at Warner Basin (inches)	0.85
Precip direct to open water surfaces	0
<b>TOTAL INFLOW</b>	<b>33,133</b>

LOSSES FROM RECHARGE AREAS (AF)	
Est'd SAR flow past Chapman Ave.	110
Est'd Santiago Cr. flow to SAR	0
Est'd flows past Raymond Basin	0
Calc'd evap (inches) Estimated	5.12
Est'd evaporative losses	431
<b>TOTAL LOSSES</b>	<b>541</b>

STORAGE CHANGES (AF)			
Facility	Begin	End	Net
Deep basins	10,432	10,503	71
Santiago Pits	13,550	13,277	-273
River			
Off-river			
Irvine Lake			
<b>TOTAL</b>	<b>23,982</b>	<b>23,780</b>	<b>-202</b>

SUMMARY (AF)	
TOTAL INFLOW	33,133
TOTAL LOSSES	541
STORAGE CHANGE	-202
CALC'D PERCOLATION	32,794

## DEEP BASINS MONTHLY STATUS

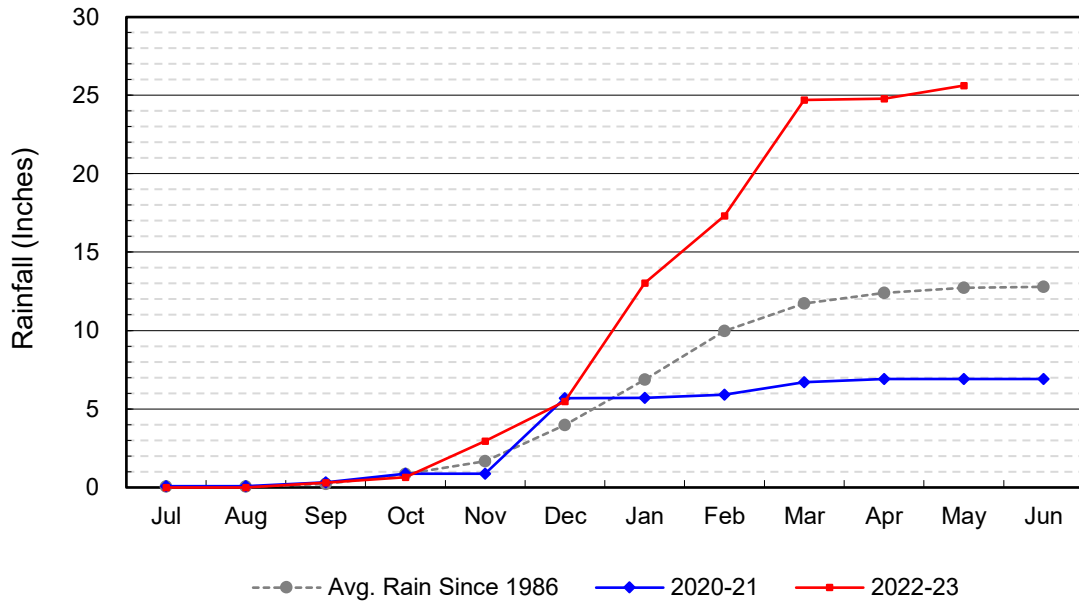
**May 2023**

(values in acre-feet)

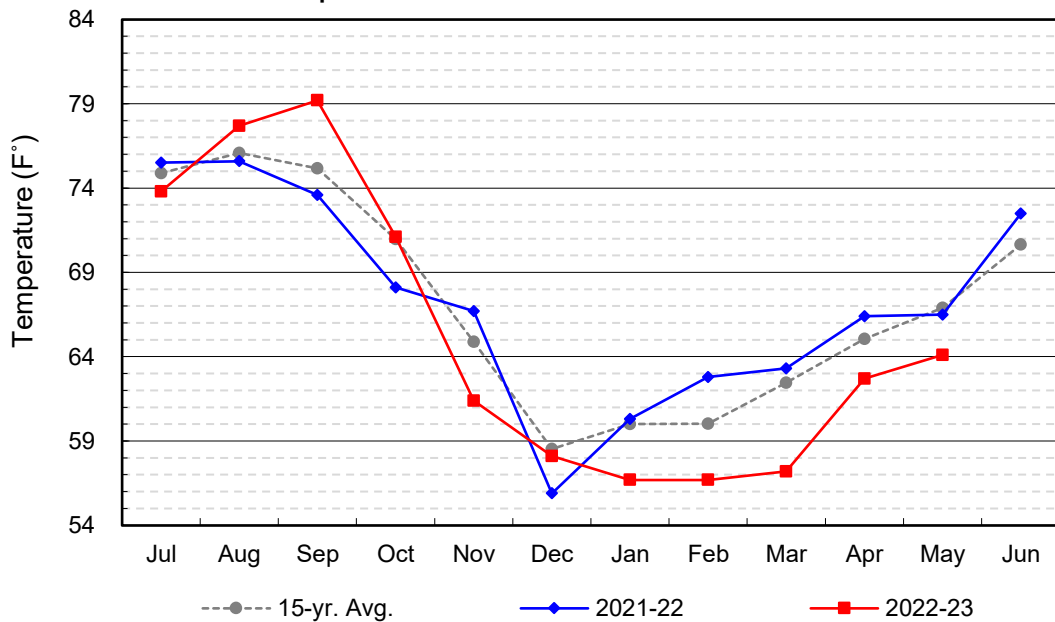
<i>Facility</i>	<i>Storage Start</i>	<i>Storage End</i>	<i>Maximum Storage</i>	<i>Total Perc</i>	<i>Max Perc</i>	<i>Avg Perc</i>	<i>Avg W.S. Elev</i>
Desilting Ponds	230	230	252	na	na	na	na
Fos-Huckleberry	568	541	628	na	na	na	na
Conrock Basin	593	564	661	na	na	na	na
Warner Basins	2,905	2,910	2,900	546	na	na	238
Olive Pit	91	91	95	na	na	na	222
Anaheim Lake	1,996	2,077	2,300	2,004	78	65	220
Mini-Anaheim Lk	0	0	10	401	39	13	222
Miller Basin	311	310	350	1,835	69	59	220
Kraemer Basin	1,054	1,062	1,055	1,499	51	48	217
La Palma Basin	54	24	101	5,590	198	180	217
Mira Loma	35	12	53	2,541	87	82	218
La Jolla Basin	1	6	20	623	39	20	200
Placentia Basin	0	0	200	na	na	na	na
Raymond Basin	5	5	200	100	na	na	na
Five Coves Basins	315	315	329	na	na	na	na
Burris Pit	2,253	2,333	2,500	2,016	76	65	169
River View Basin	7	8	8	296	12	10	189
Fletcher Basin	14	15	15	113	6	4	190
Santiago (Bond)	8,298	8,313	8,312	6,481	224	209	285
Santiago (Blu Dia)	5,252	4,964	5,259	-	-	-	-
<b>Totals</b>	<b>23,982</b>	<b>23,780</b>	<b>25,247</b>	<b>24,045</b>			
Prado Dam	14,082	6,900	20,000				



### Cumulative Anaheim Field HQ Rainfall



### Temperature at Santa Ana Fire Station



# TALBERT BARRIER MONITORING WELL OCWD-M26

