

WATER RESOURCES SUMMARY

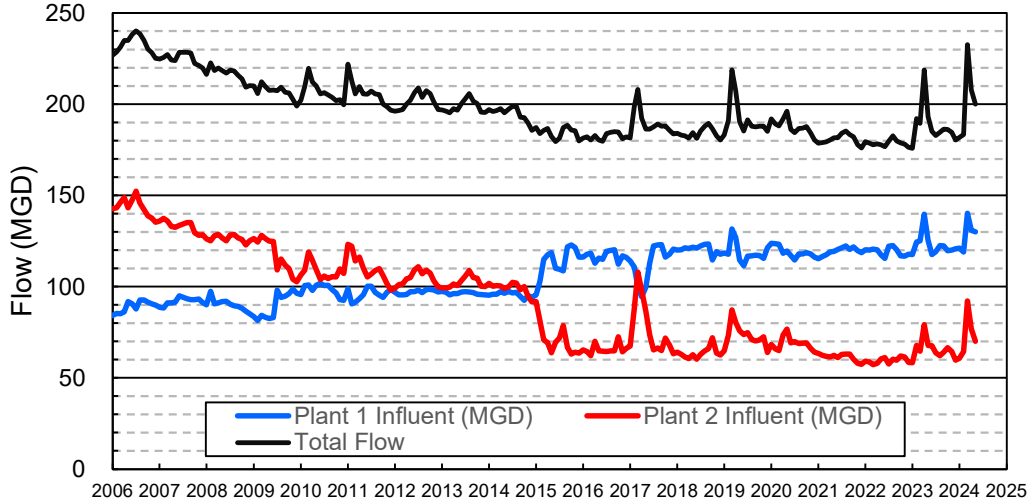
April 2024

INFLOWS & OUTFLOWS (acre-feet)	Total for Month	Year to Date - This Year Last Year	
BASIN SUPPLIES			
Water Purchases from MWD (excludes In Lieu)	0	7	16,864
Water into MWD Storage Account (excludes In Lieu)	0	0	0
SAR & Santiago Creek Flows (accounts for storage to/from recharge facilities)	28,447	278,816	268,482
GWRS Water to Forebay	6,820	72,752	58,656
GWRS Water to Mid-Basin Injection Wells	606	5,875	6,226
GWRS Water to Talbert Barrier	1,127	14,534	16,865
OC-44 and F. Valley Water to Talbert Barrier	0	11	22
Alamitos Barrier Water	175	1,716	2,114
Incidental Recharge (estimated)	1,500	19,500	20,921
Evaporation from Recharge Basins	(429)	(3,233)	(2,503)
River Flow Lost to Ocean	<u>(3,856)</u>	<u>(117,292)</u>	<u>(141,263)</u>
Total Groundwater Recharge	34,390	272,686	246,383
WATER PRODUCTION			
Groundwater Production	21,382	224,707	197,192
MWD Storage Program Withdrawals	<u>0</u>	<u>0</u>	<u>0</u>
Total Groundwater Production	21,382	224,707	197,192
BASIN BALANCE			
Change in Groundwater Storage	13,008	47,979	49,191
Change in Groundwater Storage excluding MWD Stored Water	13,008	47,979	49,191
Accumulated Overdraft	-----	141,024	208,812
Accumulated Overdraft excluding MWD Storage	-----	141,024	208,812
IN LIEU WATER			
OCWD In Lieu Purchases (MWD Cyclic Storage)	0	0	0
MWD In Lieu Storage	<u>0</u>	<u>0</u>	<u>0</u>
Total In Lieu	0	0	0
OTHER KEY INFORMATION			
1. MWD Water Deliveries to Producers	2,850	47,169	77,447
2. Basin Production Percentage	88.2%	82.7%	71.8%
3. Total Water Demand	25,669	288,234	290,880
4. Total GWRS Production	8,555	93,202	81,802
5. Green Acres Project Water	220	2,432	2,738
6. SAR Water Quality			
- Total Dissolved Solids (TDS) of SAR below Prado Dam (ppm)	NA	-----	422
- Total Nitrogen of SAR below Prado Dam (ppm)	NA	-----	1.9
7. Month-End Water Storage Behind Prado Dam	14,067	-----	14,082
8. Month-End Water Storage in Recharge Facilities	24,303	-----	23,982
9. Water Storage Change in Recharge Facilities	444	3,053	13,106
10. Total Artificial Recharge	32,890	253,186	225,462
11. Monthly Mean Temperature at Santa Ana Fire Station (°F)	64.0	-----	62.7
12. Rainfall at FHQ (inches)	1.26	20.78	24.78

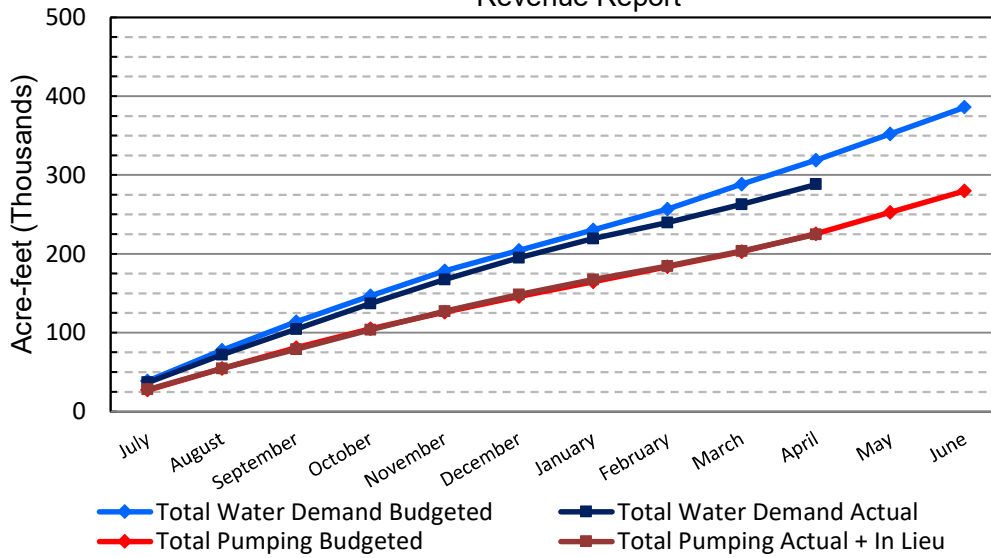
*** Note: Data are preliminary, subject to change

5/9/2024

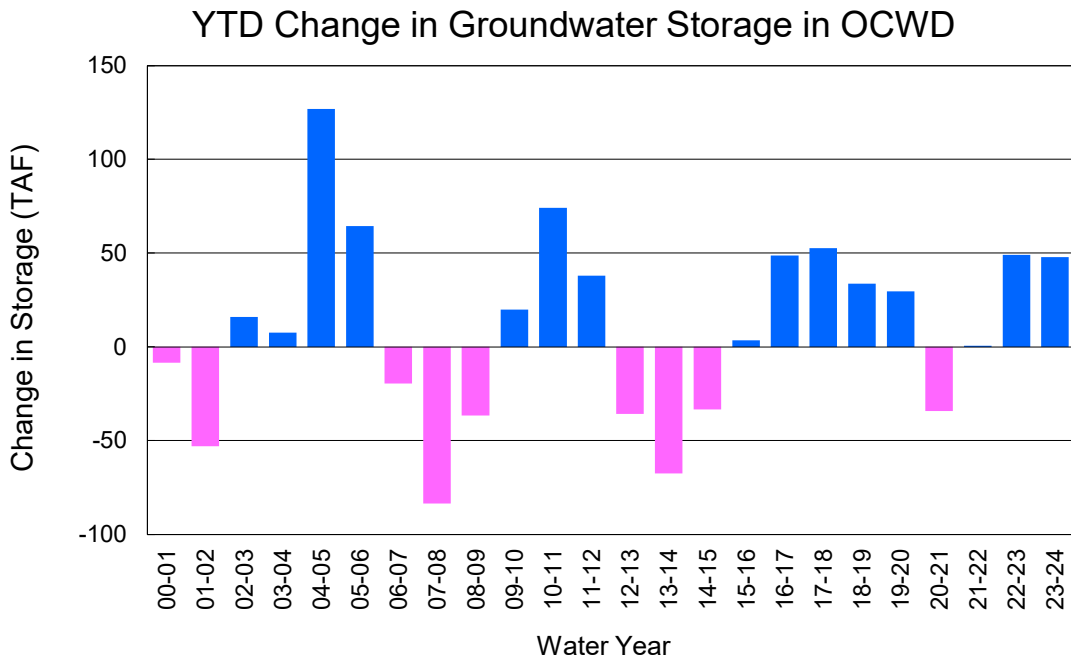
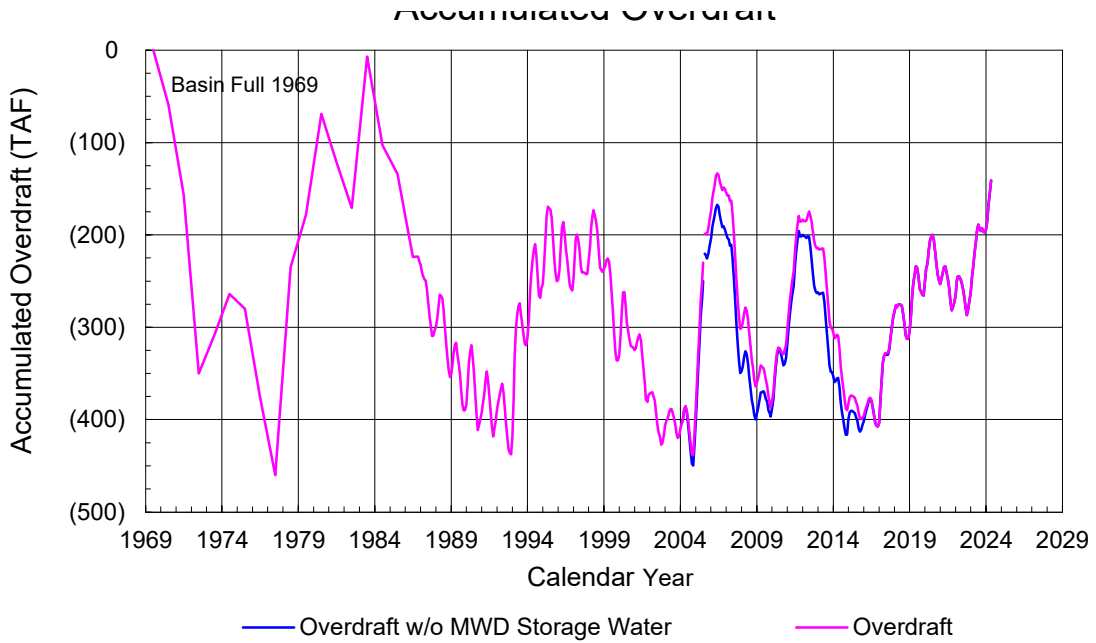
Orange County Sanitation District Influent Flows Report



2023-24 Water Demands/Groundwater Pumping + In Lieu/RA Revenue Report



	Monthly		Accumulated Total for the Year			
	Budget	Actual	Budget	Actual	Difference	Percent
Total Water Demand	30,700	25,669	319,000	288,234	-30,766	90.36%
Total Pumping + In Lieu	22,600	21,382	225,500	224,707	-793	99.65%
RA Revenue	\$14,102,400	\$13,342,560	\$140,712,000	\$140,217,474	-\$494,526	99.65%



PRODUCERS WATER USAGE SUMMARY

April 2024

(AF except BPP)

WATER AGENCY	Ground-water (1)	In Lieu	Reclaimed Water	Total Import (2)	Total Demand	2023-24 YTD Demand	2022-23 YTD Demand	YTD % Diff Demand	APR 2024 BPP	2023-24 YTD BPP	2022-23 YTD BPP
Anaheim	3,409	0	0	903	4,312	43,408	42,971	101%	79.1%	58.4%	27.1%
Buena Park	855	0	0	0	855	9,610	9,786	98%	100.0%	93.3%	87.7%
East Orange County	2	0	0	40	42	602	614	98%	4.8%	1.2%	0.3%
Fountain Valley	572	0	65	0	637	7,291	7,174	102%	100.0%	100.0%	100.0%
Fullerton	956	0	0	251	1,207	16,051	17,011	94%	79.2%	76.7%	76.0%
Garden Grove	1,506	0	0	0	1,506	16,906	16,287	104%	100.0%	100.0%	77.7%
Golden State	1,043	0	0	409	1,452	16,742	16,508	101%	71.8%	64.4%	56.5%
West OC System	776	-	-	149	924	10,374	10,155	102%	na	na	na
East OC System	267	-	-	260	528	6,369	6,354	100%	na	na	na
Huntington Beach	1,442	0	0	238	1,680	19,195	19,282	100%	85.8%	86.0%	66.0%
Irvine Ranch	2,989	0	1,292	20	4,301	49,832	50,042	100%	99.3%	99.7%	99.7%
DRWF Clear	1,601	-	-	-	1,601	22,021	21,372	103%	na	na	na
DRWF Color	717	-	-	-	717	6,668	7,052	95%	na	na	na
Laguna Beach	0	0	0	180	180	2,396	2,463	na	0.0%	0.0%	18.3%
La Palma	113	0	0	0	113	1,314	1,330	99%	100.0%	100.0%	99.7%
Mesa Water (MW)	1,100	0	25	0	1,125	12,676	12,780	99%	100.0%	100.0%	99.9%
MW Clear	796	-	-	-	796	10,433	9,920	105%	na	na	na
MW Amber	304	-	-	-	304	1,727	2,266	76%	na	na	na
Newport Beach	859	0	21	167	1,047	10,258	10,865	94%	83.7%	78.5%	78.9%
Orange	1,514	0	0	107	1,621	18,761	18,915	99%	93.4%	88.3%	80.0%
OCWD (GAP)	110	0	0	0	110	1,344	1,198	112%	100.0%	100.0%	100.0%
Santa Ana	2,077	0	35	245	2,357	25,396	25,403	100%	89.4%	85.4%	71.1%
Seal Beach	161	0	0	69	229	2,415	2,288	106%	70.0%	96.9%	74.1%
Serrano	102	0	0	44	146	1,834	2,310	79%	69.6%	44.2%	65.4%
Tustin	533	0	0	150	683	7,896	7,885	100%	78.0%	72.8%	51.9%
Westminster	736	0	0	0	736	8,056	8,058	100%	100.0%	100.0%	97.3%
Yorba Linda	<u>1,051</u>	<u>0</u>	<u>0</u>	<u>23</u>	<u>1,074</u>	<u>13,537</u>	<u>13,545</u>	<u>100%</u>	<u>97.9%</u>	<u>87.6%</u>	<u>85.6%</u>
SUBTOTAL:	21,130	0	1,437	2,846	25,413	285,518	286,715	100%	88.2%	82.7%	71.8%
Other Producers (Est ~3% of Subtotal)	<u>253</u>	<u>0</u>	<u>0</u>	<u>4</u>	<u>256</u>	<u>2,716</u>	<u>4,164</u>	<u>65%</u>			
TOTAL:	21,382	0	1,437	2,850	25,669	288,234	290,880		88.2%	82.7%	71.8%
OCWD (Talbert Barrier)	0		1,127	0	1,127	14,545	16,887				
OCSD (GAP)	na		75	na	75	795	893				

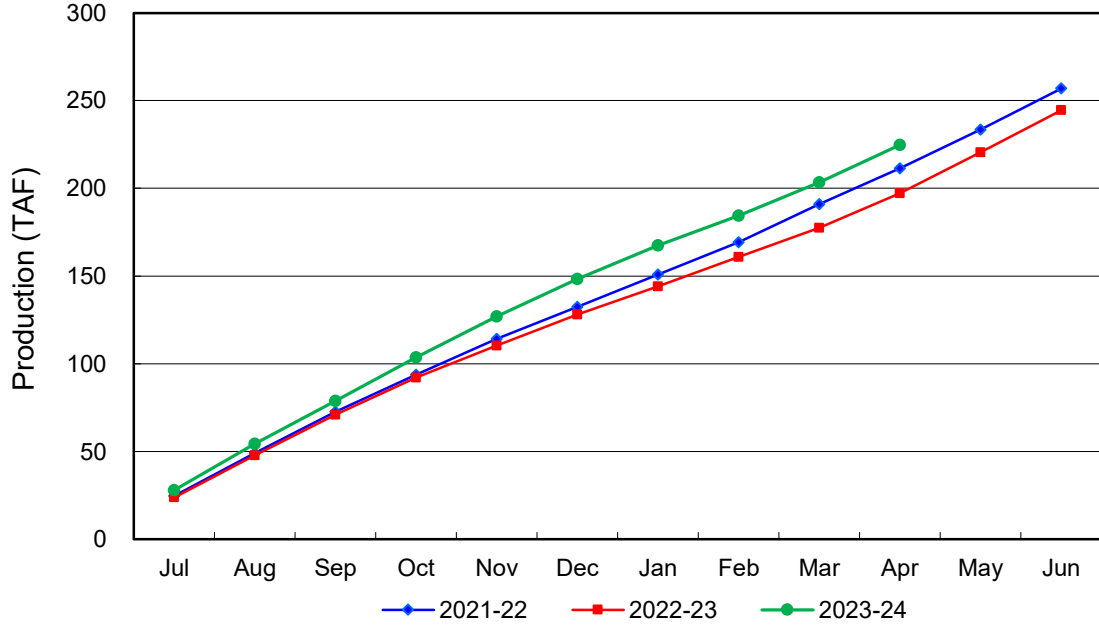
Estimated

(1) Excludes MWD CUP Withdrawals

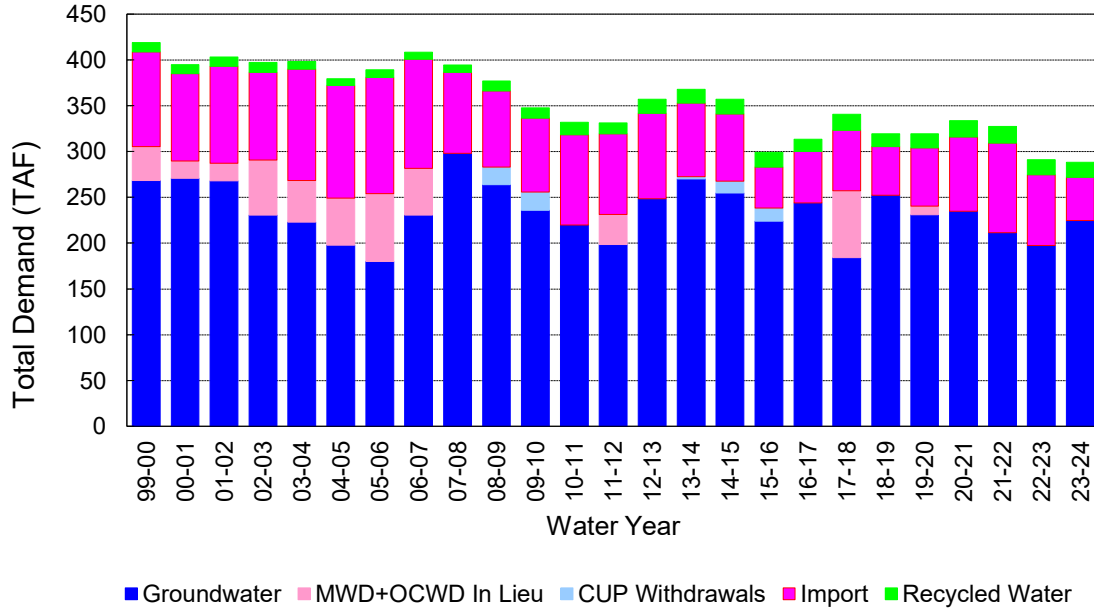
(2) Includes MWD CUP Withdrawals & In Lieu Water

5/9/2024 15:28

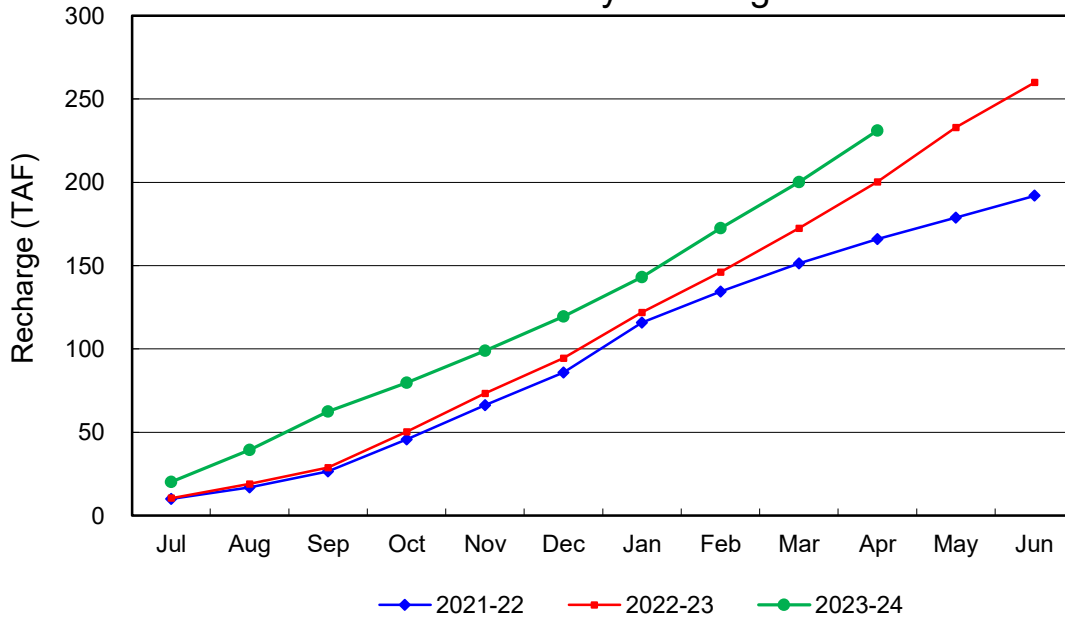
Annual Groundwater Production



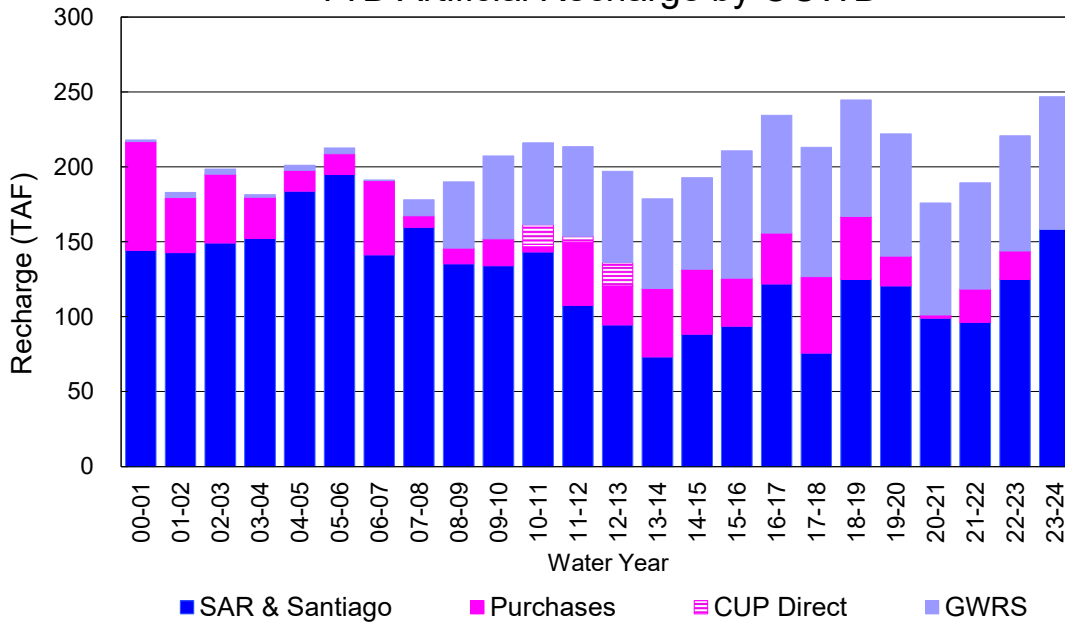
YTD Total Demand in OCWD



Annual Forebay Recharge



YTD Artificial Recharge by OCWD



RECHARGE AREAS REPORT

April 2024

	Percolation (AF)	Remarks
RIVER SYSTEM	6,092	101 cfs per day average perc
DESILTING SYSTEM	na	SAR
OFF-RIVER SYSTEM	2,142	SAR
WARNER SYSTEM	387	SAR
OLIVE BASIN	na	Passive System
ANAHEIM LAKE	2,336	SAR
MINI-ANA LAKE	270	SAR
MILLER BASIN	1,589	SAR
KRAEMER BASIN	3,410	SAR
LA PALMA BASIN	4,737	GWRS
MIRALOMA BASIN	2,099	GWRS
LA JOLLA BASIN	501	SAR
PLACENTIA BASIN	14	SAR
RAYMOND BASIN	322	SAR
FIVE COVES BASIN	na	SAR
BURRIS BASIN	1,164	SAR
RIVER VIEW BASIN	432	SAR, Burris Pumping
FLETCHER BASIN	51	SAR, Burris Pumping, Local Runoff
SANTIAGO BASINS	5,087	SAR, Burris Pumping, Local Runoff
SANTIAGO CREEK	349	SAR, Burris Pumping, Local Runoff
TOTALS	30,982	
5-YR AVERAGE	22,729	

FLOWS TO RECHARGE AREAS (AF)	
Imperial Headgates (estimated)	27,547
GWRS	6,820
OC-28 (MWD)	0
OC-28a (MWD)	0
OC-59	0
Est'd local Forebay inflow below Imperial	829
Est'd local Santiago inflow (estimated)	407
Irvine lake releases (OC-13 MWD)	0
Villa Park Dam releases (estimated)	0
Precip at Warner Basin (inches)	1.26
Precip direct to open water surfaces	108
TOTAL INFLOW	35,711

LOSSES FROM RECHARGE AREAS (AF)	
Est'd SAR flow past Chapman Ave.	3,856
Est'd Santiago Cr. flow to SAR	0
Est'd flows past Raymond Basin	0
Calc'd evap (inches) Estimated	5
Est'd evaporative losses	429
TOTAL LOSSES	4,285

STORAGE CHANGES (AF)			
Facility	Begin	End	Net
Deep basins	10,287	11,077	790
Santiago Pits	13,572	13,226	-346
River			
Off-river			
Irvine Lake			
TOTAL	23,859	24,303	444

SUMMARY (AF)	
TOTAL INFLOW	35,711
TOTAL LOSSES	4,285
STORAGE CHANGE	444
CALC'D PERCOLATION	30,982

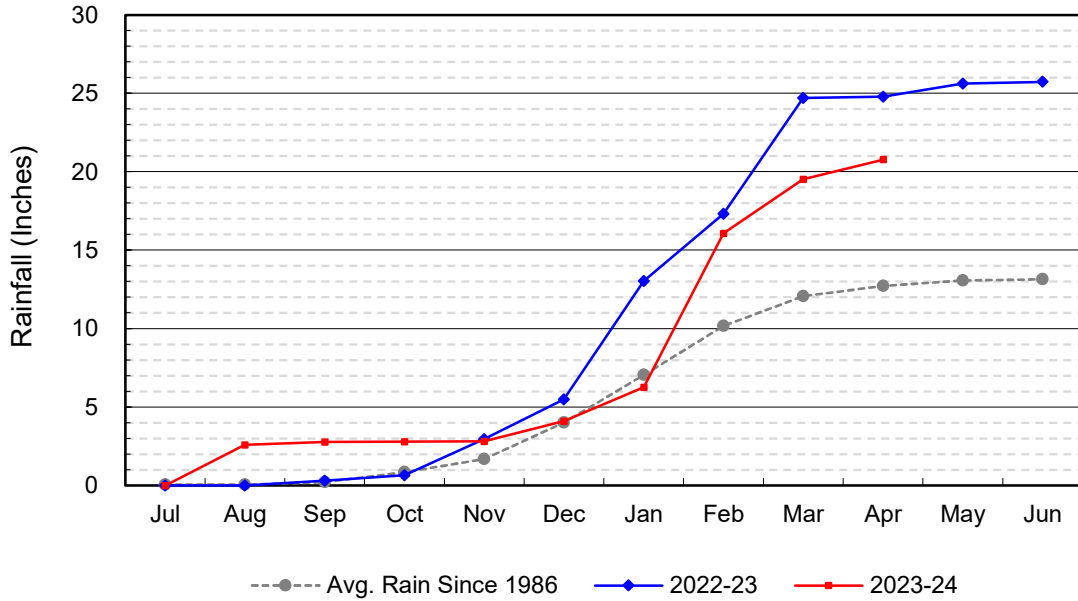
DEEP BASINS MONTHLY STATUS

April 2024

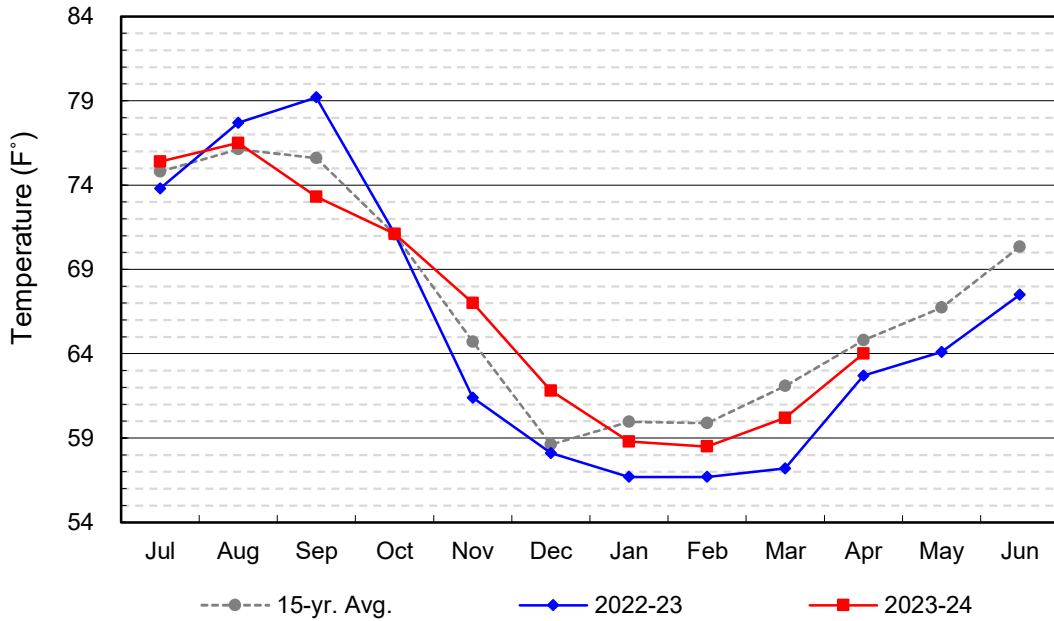
(values in acre-feet)

<i>Facility</i>	<i>Storage Start</i>	<i>Storage End</i>	<i>Maximum Storage</i>	<i>Total Perc</i>	<i>Max Perc</i>	<i>Avg Perc</i>	<i>Avg W.S. Elev</i>
Desilting Ponds	230	230	252	na	na	na	na
Fos-Huckleberry	552	581	628	na	na	na	na
Conrock Basin	558	610	661	na	na	na	na
Warner Basins	2,928	2,937	2,900	387	na	na	239
Olive Pit	69	90	95	na	na	na	220
Anaheim Lake	1,877	2,223	2,300	2,336	99	77	222
Mini-Anaheim Lk	2	12	10	270	14	9	225
Miller Basin	207	313	350	1,589	59	52	219
Kraemer Basin	1,089	1,107	1,055	3,410	129	112	219
La Palma Basin	74	65	101	4,737	172	158	218
Miraloma Basin	34	25	53	2,099	76	70	219
La Jolla Basin	12	11	20	501	40	17	201
Placentia Basin	0	0	200	14	na	na	na
Raymond Basin	10	150	200	322	na	na	na
Five Coves Basins	209	237	329	na	na	na	na
Burriss Pit	2,420	2,464	2,500	1,164	41	38	171
River View Basin	0	7	8	432	23	14	188
Fletcher Basin	16	15	15	51	4	2	190
Santiago (Bond)	8,308	8,294	8,312	5,087	183	168	285
Santiago (Blu Dia)	5,264	4,932	5,259	-	-	-	-
Totals	23,859	24,303	25,247	22,399			
Prado Dam	20,225	14,067	20,000				

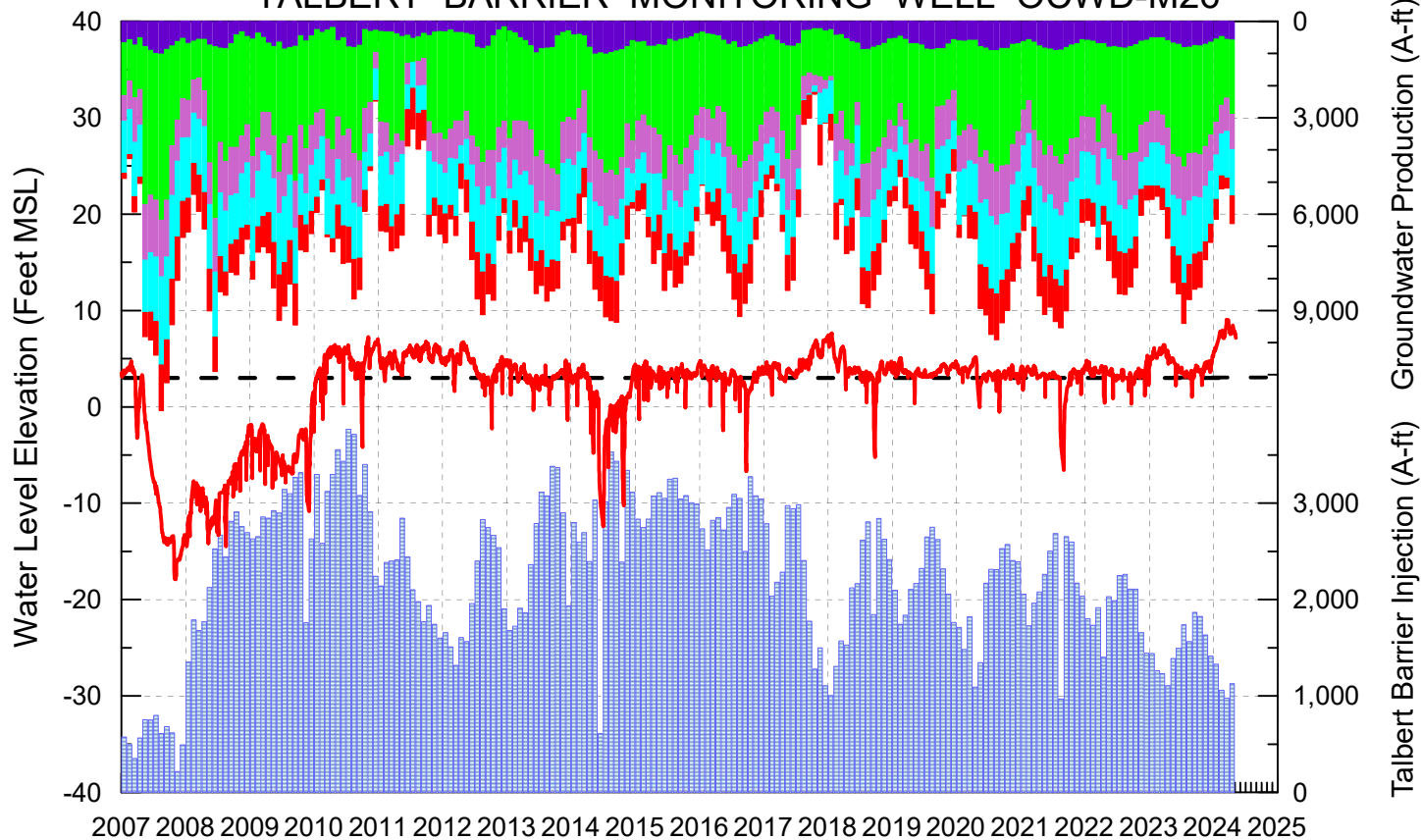
Cumulative Anaheim Field HQ Rainfall



Temperature at Santa Ana Fire Station



TALBERT BARRIER MONITORING WELL OCWD-M26



- Talbert/Lambda Aquifer Mergence Zone
Perforated Interval: 71 - 135 ft. bgs
- ▨ Talbert Barrier Injection
- Protective Level to Prevent Seawater Intrusion
- Fountain Valley Groundwater Production
- IRWD Groundwater Production
- Mesa Water Groundwater Production
- Huntington Beach Groundwater Production
- Newport Beach Groundwater Production

