

WATER RESOURCES SUMMARY

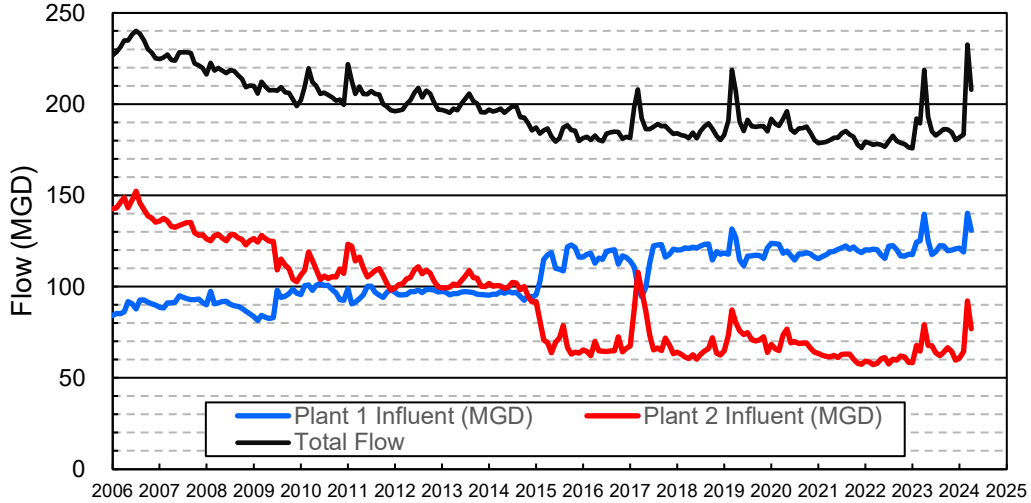
March 2024

INFLOWS & OUTFLOWS (acre-feet)	Total for Month	Year to Date - This Year Last Year	
BASIN SUPPLIES			
Water Purchases from MWD (excludes In Lieu)	0	7	16,864
Water into MWD Storage Account (excludes In Lieu)	0	0	0
SAR & Santiago Creek Flows (accounts for storage to/from recharge facilities)	42,896	250,369	241,840
GWRS Water to Forebay	3,261	65,932	53,564
GWRS Water to Mid-Basin Injection Wells	481	5,269	5,644
GWRS Water to Talbert Barrier	978	13,407	15,758
OC-44 and F. Valley Water to Talbert Barrier	4	11	18
Alamitos Barrier Water	110	1,466	1,940
Incidental Recharge (estimated)	2,500	18,200	19,521
Evaporation from Recharge Basins	(312)	(2,804)	(2,101)
River Flow Lost to Ocean	<u>(18,234)</u>	<u>(113,436)</u>	<u>(137,677)</u>
Total Groundwater Recharge	31,685	238,420	215,370
WATER PRODUCTION			
Groundwater Production	18,770	203,233	177,467
MWD Storage Program Withdrawals	<u>0</u>	<u>0</u>	<u>0</u>
Total Groundwater Production	18,770	203,233	177,467
BASIN BALANCE			
Change in Groundwater Storage	12,915	35,188	37,903
Change in Groundwater Storage excluding MWD Stored Water	12,915	35,188	37,903
Accumulated Overdraft	-----	153,815	220,100
Accumulated Overdraft excluding MWD Storage	-----	153,815	220,099
IN LIEU WATER			
OCWD In Lieu Purchases (MWD Cyclic Storage)	0	0	0
MWD In Lieu Storage	<u>0</u>	<u>0</u>	<u>0</u>
Total In Lieu	0	0	0
OTHER KEY INFORMATION			
1. MWD Water Deliveries to Producers	2,869	44,162	72,022
2. Basin Production Percentage	86.7%	82.1%	71.1%
3. Total Water Demand	22,889	262,316	264,157
4. Total GWRS Production	4,722	84,647	75,018
5. Green Acres Project Water	106	2,212	2,517
6. SAR Water Quality			
- Total Dissolved Solids (TDS) of SAR below Prado Dam (ppm)	352	-----	324
- Total Nitrogen of SAR below Prado Dam (ppm)	1.4	-----	1.9
7. Month-End Water Storage Behind Prado Dam	20,225	-----	19,435
8. Month-End Water Storage in Recharge Facilities	23,859	-----	24,304
9. Water Storage Change in Recharge Facilities	(127)	2,609	13,428
10. Total Artificial Recharge	29,185	220,220	195,849
11. Monthly Mean Temperature at Santa Ana Fire Station (°F)	60.0	-----	57.2
12. Rainfall at FHQ (inches)	3.45	19.52	24.70

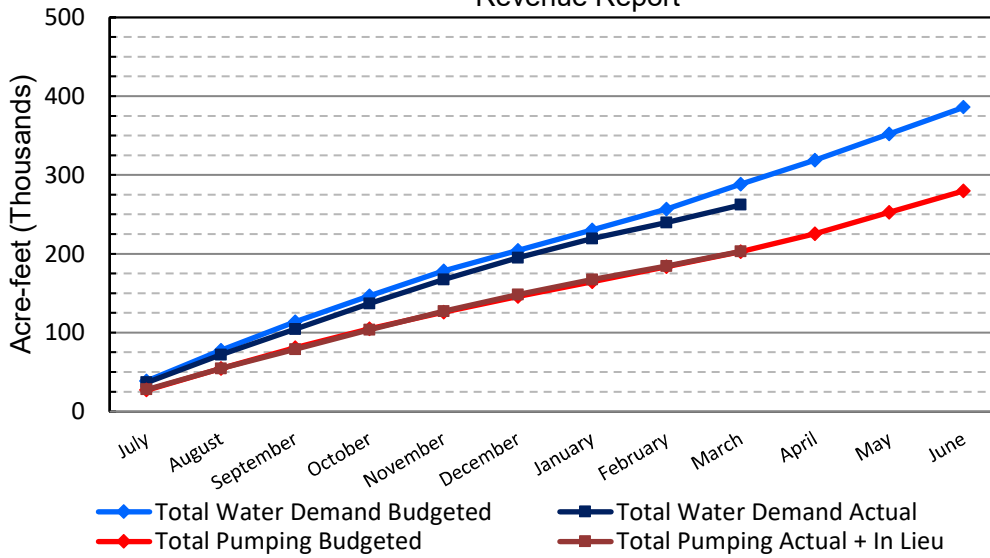
*** Note: Data are preliminary, subject to change

4/11/2024

Orange County Sanitation District Influent Flows Report

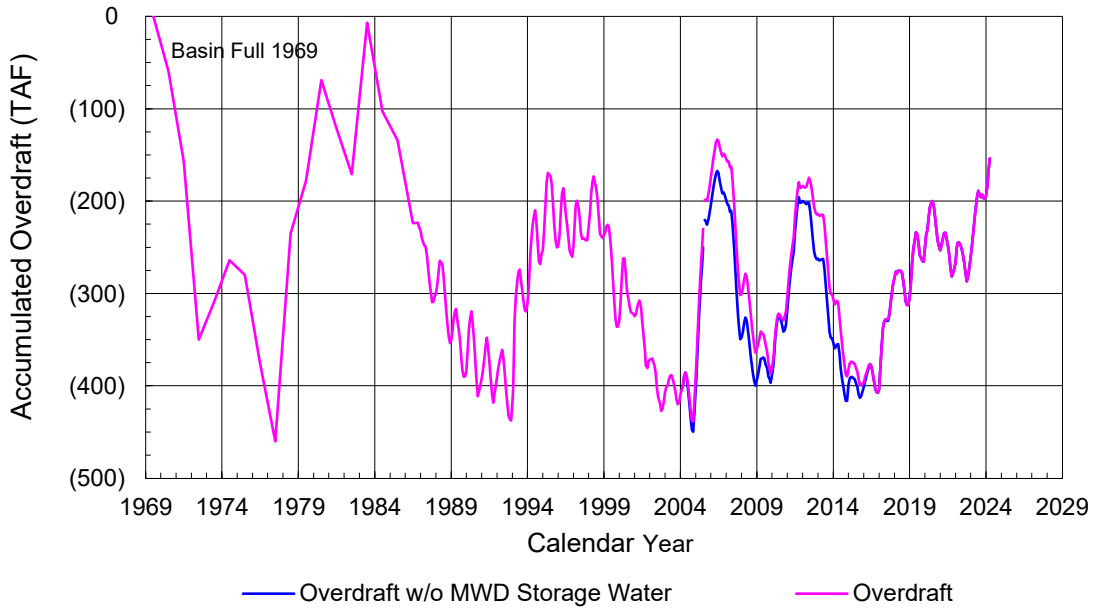


2023-24 Water Demands/Groundwater Pumping + In Lieu/RA Revenue Report

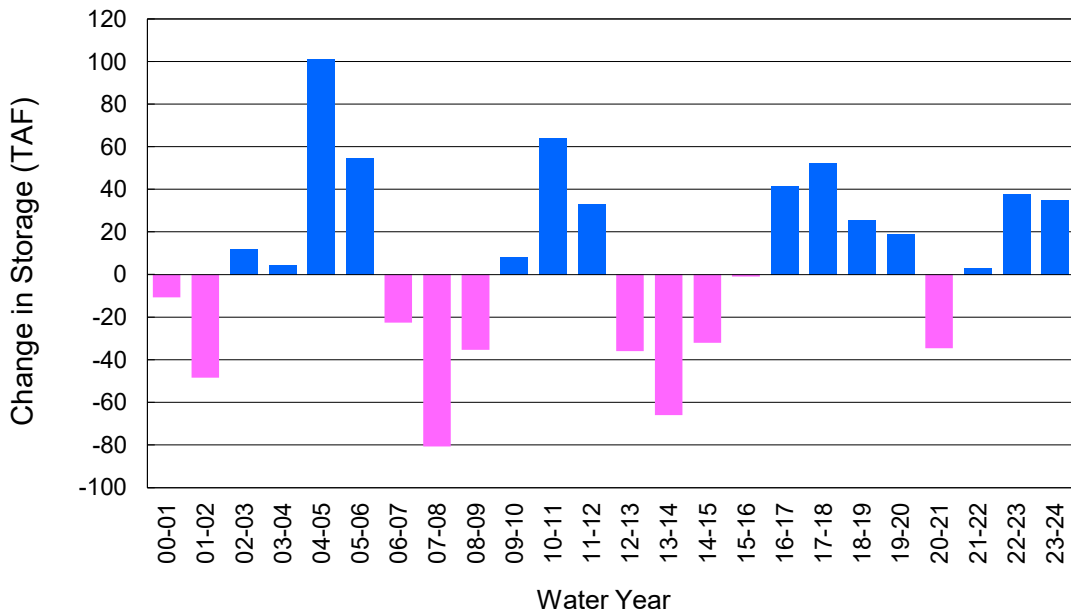


	Monthly		Accumulated Total for the Year			
	Budget	Actual	Budget	Actual	Difference	Percent
Total Water Demand	31,500	22,889	288,300	262,316	-25,984	90.99%
Total Pumping + In Lieu	19,100	18,770	202,900	203,233	333	100.16%
RA Revenue	\$11,918,400	\$11,712,561	\$126,609,600	\$126,817,337	\$207,737	100.16%

Accumulated Overdraft



YTD Change in Groundwater Storage in OCWD



PRODUCERS WATER USAGE SUMMARY

March 2024

(AF except BPP)

WATER AGENCY	Ground-water (1)	In Lieu	Reclaimed Water	Total Import (2)	Total Demand	2023-24 YTD Demand	2022-23 YTD Demand	YTD % Diff Demand	MAR 2024 BPP	2023-24 YTD BPP	2022-23 YTD BPP
Anaheim	2,782	0	0	943	3,725	39,096	39,190	100%	74.7%	56.2%	26.7%
Buena Park	727	0	0	1	727	8,755	8,841	99%	99.9%	92.6%	86.5%
East Orange County	0	0	0	35	35	553	554	100%	0.0%	0.4%	0.3%
Fountain Valley	464	0	19	0	483	6,567	6,542	100%	100.0%	100.0%	100.0%
Fullerton	1,015	0	0	230	1,245	14,845	15,486	96%	81.6%	76.5%	76.7%
Garden Grove	1,411	0	0	0	1,411	15,400	14,805	104%	100.0%	100.0%	75.5%
Golden State	948	0	0	383	1,331	15,290	15,024	102%	71.2%	63.7%	56.7%
West OC System	689	-	-	165	854	9,449	9,228	102%	na	na	na
East OC System	260	-	-	218	477	5,841	5,795	101%	na	na	na
Huntington Beach	1,455	0	0	141	1,595	17,515	17,560	100%	91.2%	86.1%	64.8%
Irvine Ranch	2,576	0	1,187	36	3,799	45,532	45,055	101%	98.6%	99.8%	99.7%
DRWF Clear	1,095	-	-	-	1,095	20,420	19,350	106%	na	na	na
DRWF Color	735	-	-	-	735	5,952	6,346	94%	na	na	na
Laguna Beach	0	0	0	170	170	2,190	2,269	na	0.0%	0.0%	19.8%
La Palma	106	0	0	0	106	1,200	1,210	99%	100.0%	100.0%	99.7%
Mesa Water (MW)	1,037	0	17	0	1,054	11,550	11,607	100%	100.0%	100.0%	99.9%
MW Clear	1,037	-	-	-	1,037	9,637	8,811	109%	na	na	na
MW Amber	0	-	-	-	0	1,423	2,249	63%	na	na	na
Newport Beach	317	0	8	427	753	9,210	9,792	94%	42.6%	77.9%	77.7%
Orange	1,358	0	0	111	1,469	17,140	17,191	100%	92.5%	87.8%	78.3%
OCWD (GAP)	106	0	0	0	106	1,234	1,060	117%	100.0%	100.0%	100.0%
Santa Ana	1,960	0	18	279	2,257	23,039	23,034	100%	87.5%	85.0%	69.6%
Seal Beach	207	0	0	1	208	2,186	2,100	104%	99.7%	99.7%	71.8%
Serrano	37	0	0	71	108	1,688	2,127	79%	34.3%	42.0%	67.2%
Tustin	458	0	0	30	488	7,086	7,176	99%	93.9%	73.6%	52.2%
Westminster	711	0	0	0	711	7,320	7,301	100%	100.0%	100.0%	97.0%
Yorba Linda	<u>873</u>	<u>0</u>	<u>0</u>	<u>9</u>	<u>881</u>	<u>12,463</u>	<u>12,308</u>	<u>101%</u>	<u>99.0%</u>	<u>86.7%</u>	<u>84.8%</u>
SUBTOTAL:	18,548	0	1,250	2,865	22,663	259,857	260,233	100%	86.7%	82.1%	71.1%
Other Producers (Est ~3% of Subtotal)	<u>222</u>	<u>0</u>	<u>0</u>	<u>4</u>	<u>225</u>	<u>2,458</u>	<u>3,924</u>	<u>63%</u>			
TOTAL:	18,770	0	1,250	2,869	22,889	262,316	264,157		86.7%	82.1%	71.1%
OCWD (Talbert Barrier)	0		978	0	978	13,418	15,776				
OCSA (GAP)	na		43	na	43	720	788				

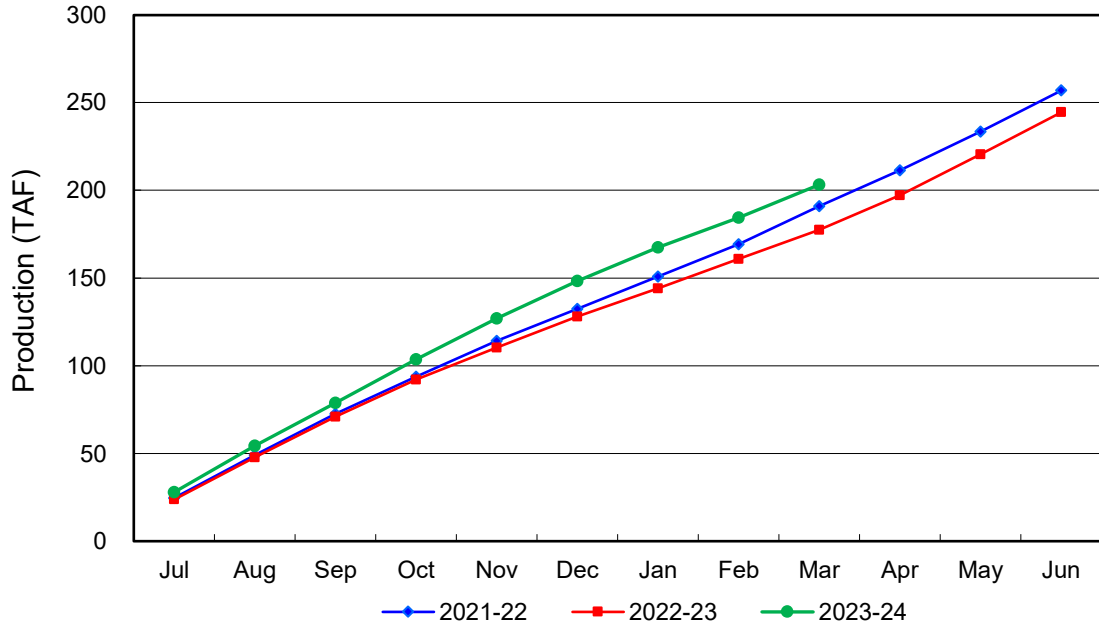
Estimated

(1) Excludes MWD CUP Withdrawals

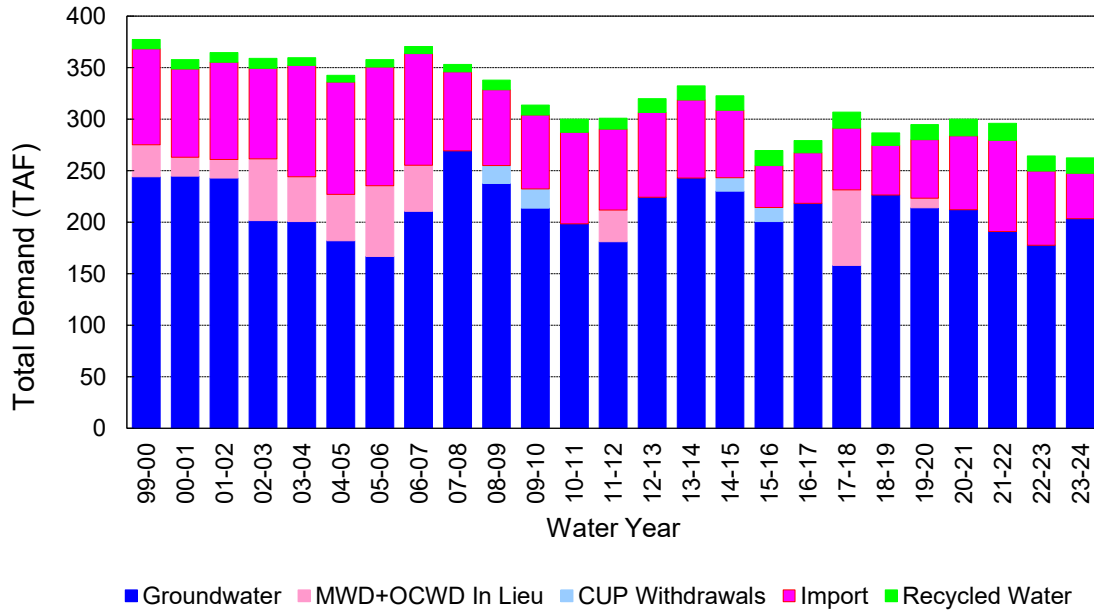
(2) Includes MWD CUP Withdrawals & In Lieu Water

4/11/2024 13:28

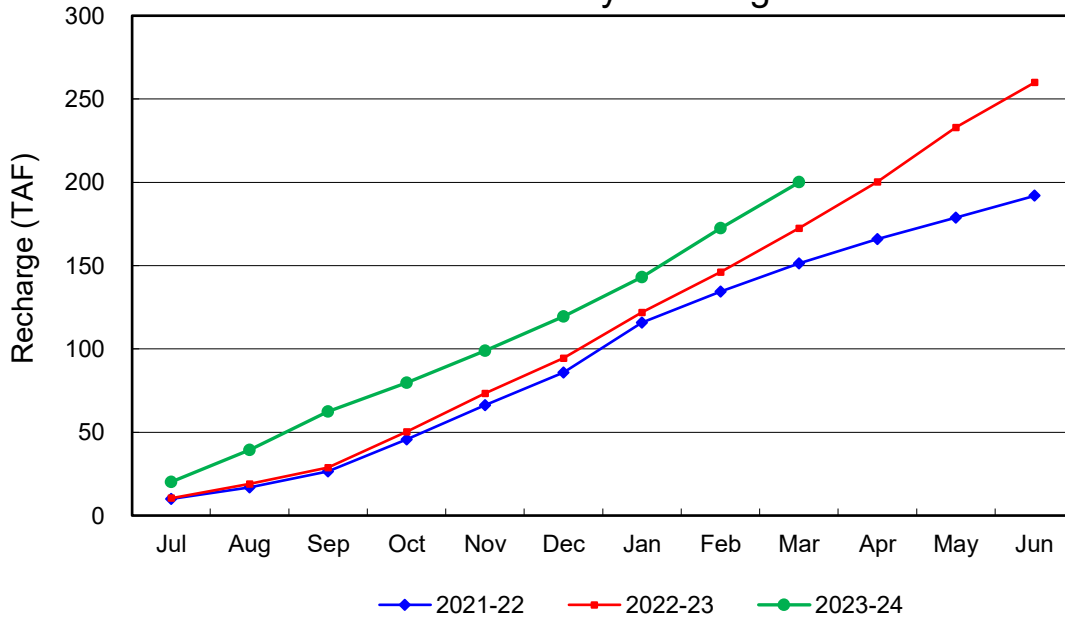
Annual Groundwater Production



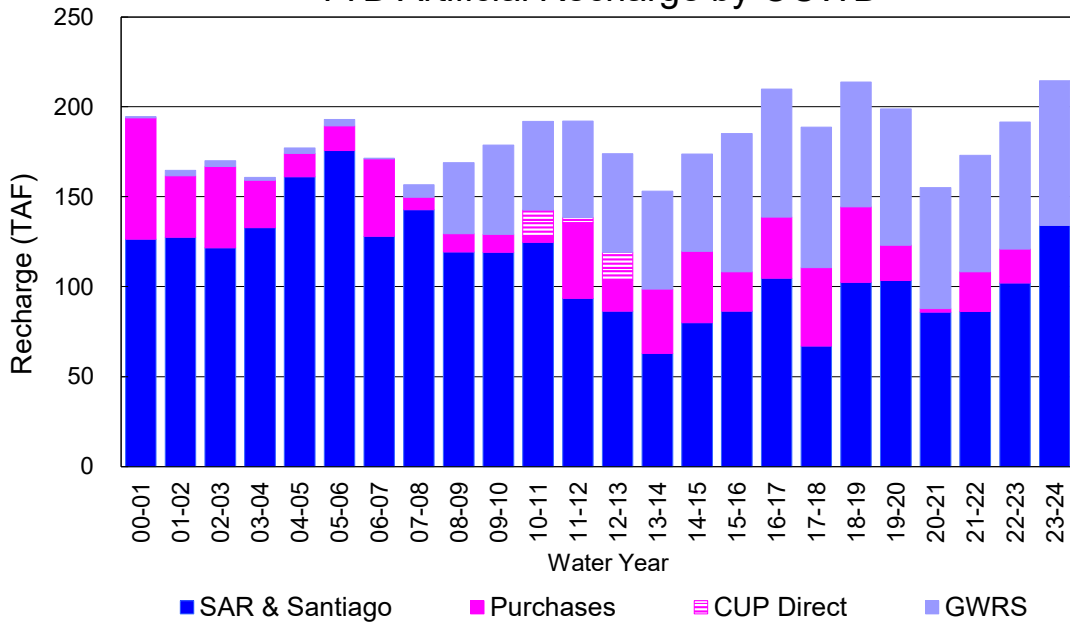
YTD Total Demand in OCWD



Annual Forebay Recharge



YTD Artificial Recharge by OCWD



RECHARGE AREAS REPORT

March 2024

	Percolation (AF)	Remarks
RIVER SYSTEM	5,914	96 cfs per day average perc
DESILTING SYSTEM	na	SAR
OFF-RIVER SYSTEM	1,807	SAR
WARNER SYSTEM	157	SAR
OLIVE BASIN	na	Passive System
ANAHEIM LAKE	2,885	SAR
MINI-ANA LAKE	173	SAR
MILLER BASIN	1,420	SAR
KRAEMER BASIN	4,191	GWRS, SAR
LA PALMA BASIN	1,935	GWRS
MIRALOMA BASIN	1,318	GWRS
LA JOLLA BASIN	284	SAR
PLACENTIA BASIN	na	
RAYMOND BASIN	214	SAR
FIVE COVES BASIN	na	SAR
BURRIS BASIN	981	SAR
RIVER VIEW BASIN	39	SAR, Burris Pumping
FLETCHER BASIN	55	SAR, Burris Pumping, Local Runoff
SANTIAGO BASINS	5,960	SAR, Burris Pumping, Local Runoff
SANTIAGO CREEK	280	SAR, Burris Pumping, Local Runoff
TOTALS	27,613	
5-YR AVERAGE	22,911	

FLOWS TO RECHARGE AREAS (AF)	
Imperial Headgates (estimated)	37,534
GWRS	3,263
OC-28 (MWD)	0
OC-28a (MWD)	0
OC-59	0
Est'd local Forebay inflow below Imperial	2,648
Est'd local Santiago inflow (estimated)	827
Irvine lake releases (OC-13 MWD)	1,468
Villa Park Dam releases (estimated)	0
Precip at Warner Basin (inches)	3.45
Precip direct to open water surfaces	293
TOTAL INFLOW	46,033

LOSSES FROM RECHARGE AREAS (AF)	
Est'd SAR flow past Chapman Ave.	18,067
Est'd Santiago Cr. flow to SAR	167
Est'd flows past Raymond Basin	0
Calc'd evap (inches) Estimated	3.68
Est'd evaporative losses	312
TOTAL LOSSES	18,546

STORAGE CHANGES (AF)			
Facility	Begin	End	Net
Deep basins	10,473	10,287	-186
Santiago Pits	13,513	13,572	59
River			
Off-river			
Irvine Lake			
TOTAL	23,986	23,859	-127

SUMMARY (AF)	
TOTAL INFLOW	46,033
TOTAL LOSSES	18,546
STORAGE CHANGE	-127
CALC'D PERCOLATION	27,613

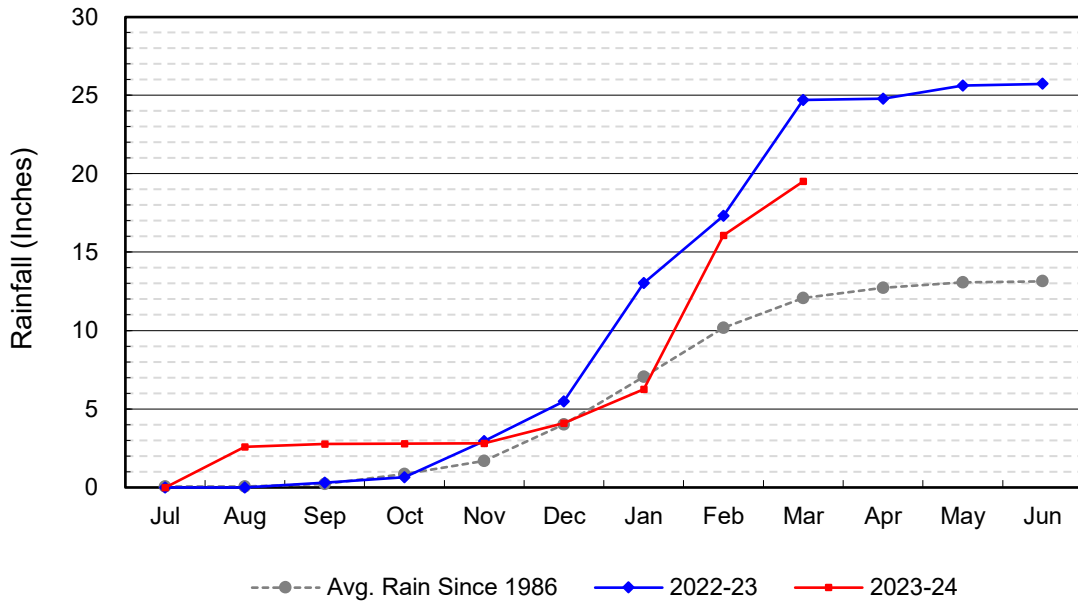
DEEP BASINS MONTHLY STATUS

March 2024

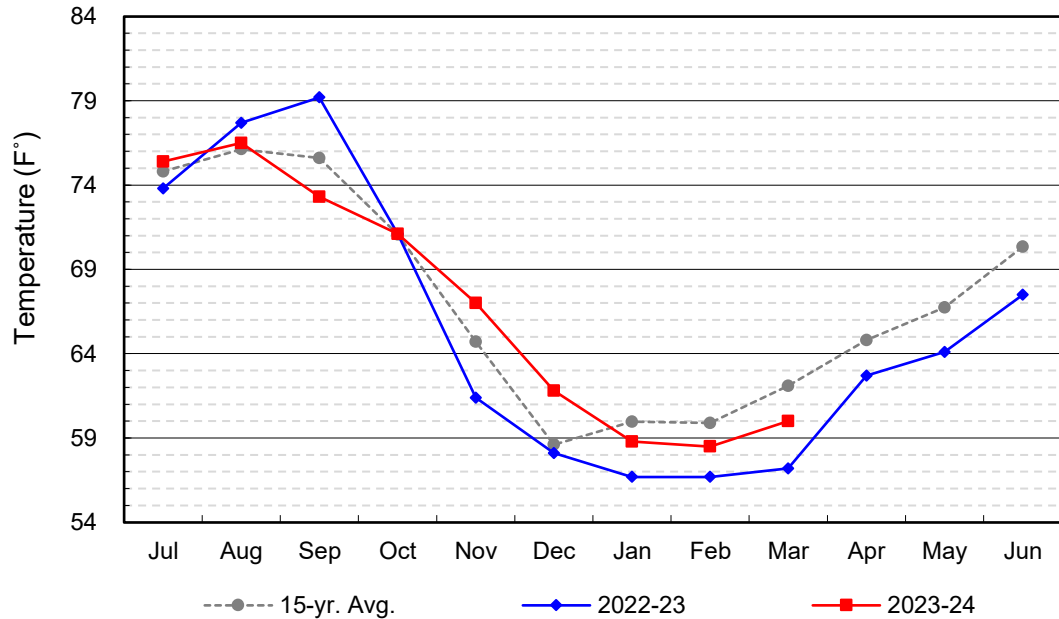
(values in acre-feet)

<i>Facility</i>	<i>Storage Start</i>	<i>Storage End</i>	<i>Maximum Storage</i>	<i>Total Perc</i>	<i>Max Perc</i>	<i>Avg Perc</i>	<i>Avg W.S. Elev</i>
Desilting Ponds	230	230	252	na	na	na	na
Fos-Huckleberry	583	552	628	na	na	na	na
Conrock Basin	604	558	661	na	na	na	na
Warner Basins	2,917	2,928	2,900	157	na	na	239
Olive Pit	49	69	95	na	na	na	217
Anaheim Lake	2,062	1,877	2,300	2,885	104	95	221
Mini-Anaheim Lk	2	2	10	173	14	6	222
Miller Basin	241	207	350	1,420	55	47	215
Kraemer Basin	1,071	1,089	1,055	4,191	141	135	218
La Palma Basin	88	74	101	1,935	156	62	213
Miraloma Basin	43	34	53	1,318	78	43	216
La Jolla Basin	18	12	20	284	17	9	202
Placentia Basin	0	0	200	na	na	na	na
Raymond Basin	0	10	200	214	na	na	na
Five Coves Basins	221	209	329	na	na	na	na
Burris Pit	2,327	2,420	2,500	981	40	32	171
River View Basin	7	0	8	39	3	1	188
Fletcher Basin	10	16	15	55	5	2	189
Santiago (Bond)	8,281	8,308	8,312	5,960	233	197	285
Santiago (Blu Dia)	5,232	5,264	5,259	-	-	-	-
Totals	23,986	23,859	25,247	19,612			
Prado Dam	19,506	20,225	20,000				

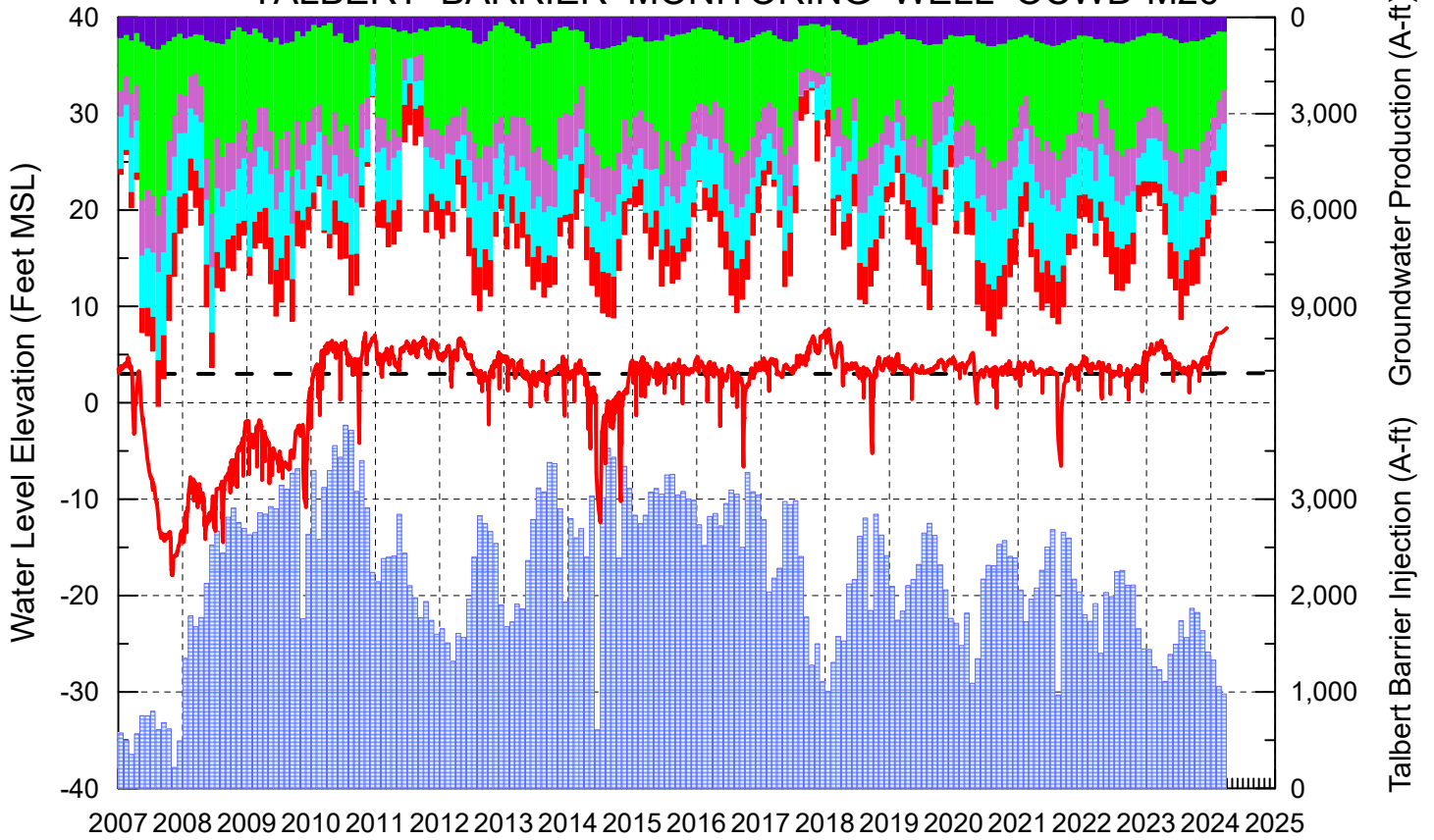
Cumulative Anaheim Field HQ Rainfall



Temperature at Santa Ana Fire Station



TALBERT BARRIER MONITORING WELL OCWD-M26



- Talbert/Lambda Aquifer Mergence Zone Perforated Interval: 71 - 135 ft. bgs
- ▨ Talbert Barrier Injection
- Protective Level to Prevent Seawater Intrusion
- ▨ Fountain Valley Groundwater Production
- ▨ IRWD Groundwater Production
- ▨ Mesa Water Groundwater Production
- ▨ Huntington Beach Groundwater Production
- ▨ Newport Beach Groundwater Production

